



---

## ***Section E — Thermoplastic Fittings***

TrueSeal™ ..... E2-18

Fast & Tite® ..... E19-25

Par-Barb ..... E26-30

Mini-Barb ..... E31-44

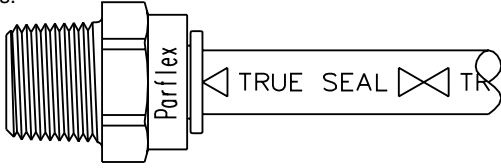
**E**

Contact Parflex for current price and delivery information on shaded parts.



# TrueSeal™ Thermoplastic Push-In Fittings

The patented\* TrueSeal push-to-connect thermoplastic fittings are light weight, reusable, and connect to plastic tubing without the use of tools.



## Features

- All components in TrueSeal fittings are manufactured from FDA compliant materials and are NSF-51 listed for contact with food and potable water.
- All-plastic body designs offer reduced weight, eliminate rust, corrosion, and system contamination in applications where metal components cannot be tolerated.
- Collets are offered in either a patented all-plastic design for use with flexible tubing or with a metal grip edge made from 300 series stainless steel for use on all tubing including copper. Connections made with metal gripper collets and tube stem adapters are not reusable.
- Extra deep tube seat in fitting body provides support to reduce side-load leakage.
- Elastomer o-ring seal provides positive compression on tubing O.D. in vacuum or pressure applications.
- Removable collet design permits o-ring replacement in the field. Collets are available in colors for easy color coding of systems.
- Tube stem adapters provide a wide range of tube-to-port jump size potential and allow elbows and tees to swivel for positive tube routing alignment.

## Applications

TrueSeal fittings find wide acceptance in water conditioning, filtration, and reverse osmosis industries and on water, soft drink, beer, wine, and condiment dispensing equipment. Industrial applications range from vacuum to low-pressure hydraulic and pneumatic systems on robotics, air logic, packaging/filling equipment, and conveyors. Ink and dye transfer, lubrication and cooling lines on presses, machine tools, ion implanting devices—all rely on TrueSeal.

### Standard Materials

| Material      | Fitting Color | O-Ring  |
|---------------|---------------|---------|
| Acetal        | Gray          | Nitrile |
| Polypropylene | White         | EPDM    |
| Kynar®        | Natural       | Viton   |

Colored collets are also available in black, white, red, blue, green, yellow, and orange. [Consult division.](#)

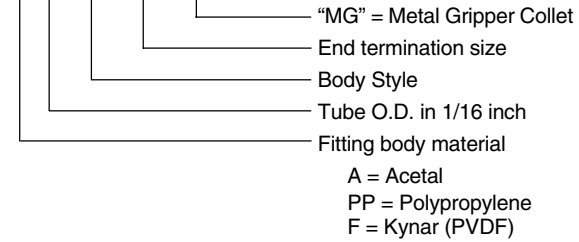
KYNAR® is a registered trademark of Atochem North America, Inc.

\*U.S. Patent 5,584,513

**Note:** Provide adequate fail-safe mechanisms such as leakage detection sensors, automatic shut-off controls or other industry and code appropriate fail-safe devices in the design of your water-handling appliance to protect against personal injury and property damage. Plastic fittings containing an o-ring that are used in water applications should be replaced at least every five years or more frequently depending on the environment and severity of the application.

## How to Order

A 4 MC 4 -MG



## Working Pressure

TrueSeal fittings are rated for the pressures listed below or at 1/4 (one-fourth) of the rated burst pressure of the tubing being used (whichever is less). One-half inch fittings with metal gripper collets are rated at 3.3:1 burst safety factor.

| Fitting Size | Acetal                               | Polypropylene                       | Kynar®                              |
|--------------|--------------------------------------|-------------------------------------|-------------------------------------|
| 1/4"         | 300                                  | 150                                 | 300                                 |
| 5/16"        | 300                                  |                                     |                                     |
| 3/8"         | 300                                  | 150                                 | 300                                 |
| 1/2"         | 250                                  |                                     |                                     |
| Temp. Range  | -20°F (-29°C)<br>to<br>+180°F (85°C) | 0°F (-18°C)<br>to<br>+225°F (110°C) | 0°F (-18°C)<br>to<br>+275°F (135°C) |

These pressure ratings are based on tests conducted with Series NR tubing at 73°F. Actual working pressures may be lower at elevated temperatures. [Consult division.](#)

## Tubing

TrueSeal fittings with all plastic collets can be used with the following tubing materials: polyethylene, polypropylene, nylon, Teflon, and polyurethane (3/8" and 1/2" polyurethane should use tube supports). TrueSeal fittings with metal gripper collets can be used with tubing listed above and soft copper tubing. [For stainless steel or glass tubing or all other metal tubing, consult factory.](#)

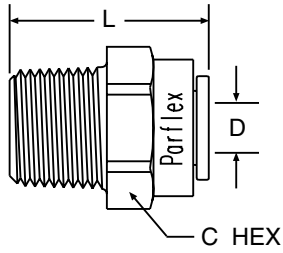
| Tube Sizes | O.D. Tolerance | Insertion Depth |
|------------|----------------|-----------------|
| 1/4"       | ±.005"         | 11/16"          |
| 5/16"      | ±.005"         | 13/16"          |
| 3/8"       | ±.005"         | 3/4"            |
| 1/2"       | ±.005"         | 7/8"            |

## Assembly Instructions

1. Cut tubing square and clean. ([Use a Parker plastic tube cutter, Part No. PTC.](#))
2. Mark from end of tube the length of insertion (see table above).
3. Push tube into the fitting until it bottoms out.
4. To remove, depress collet and pull tubing out.
5. Use Parflex TrueSealant (Part No. PTS) on threads.

# MC - Male Connector

## Tube-to-Pipe

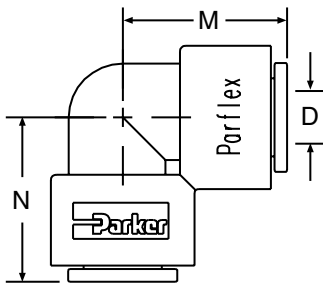


| Gray Acetal Nitrile Seal | White Polypropylene EPDM Seal | Natural Kynar Viton Seal | Nom. Tube O.D. | NPTF Thread Size | C Hex | L Overall Length | D Thru Hole Min. |
|--------------------------|-------------------------------|--------------------------|----------------|------------------|-------|------------------|------------------|
| #                        | #                             | #                        |                |                  |       |                  |                  |
| A4MC2-MG                 | PP4MC2                        | F4MC2                    | 1/4            | 1/8              | 11/16 | 1.28             | .175             |
| A4MC4-MG                 | PP4MC4                        | F4MC4                    | 1/4            | 1/4              | 11/16 | 1.14             | .175             |
| A4MC6-MG                 | PP4MC6                        | F4MC6                    | 1/4            | 3/8              | 11/16 | 1.18             | .175             |
| A5MC2-MG                 |                               |                          | 5/16           | 1/8              | 13/16 | 1.46             | .175             |
| A5MC4-MG                 |                               |                          | 5/16           | 1/4              | 13/16 | 1.41             | .188             |
| A5MC6-MG                 |                               |                          | 5/16           | 3/8              | 13/16 | 1.27             | .188             |
| A6MC2-MG                 |                               | F6MC2                    | 3/8            | 1/8              | 13/16 | 1.46             | .175             |
| A6MC4-MG                 | PP6MC4                        | F6MC4                    | 3/8            | 1/4              | 13/16 | 1.41             | .250             |
| A6MC6-MG                 | PP6MC6                        | F6MC6                    | 3/8            | 3/8              | 13/16 | 1.27             | .250             |
| A6MC8-MG                 |                               | F6MC8                    | 3/8            | 1/2              | 15/16 | 1.45             | .250             |
| A8MC6-MG                 |                               |                          | 1/2            | 3/8              | 15/16 | 1.65             | .360             |
| A8MC8-MG                 |                               |                          | 1/2            | 1/2              | 15/16 | 1.46             | .375             |

For nonstandard plastic collet, remove -MG suffix.

# EU - Elbow Union

## Tube-to-Tube



| Gray Acetal Nitrile Seal | White Polypropylene EPDM Seal | Natural Kynar Viton Seal | Nom. Tube O.D. | M    | N    | D Thru Hole Min. |
|--------------------------|-------------------------------|--------------------------|----------------|------|------|------------------|
| #                        | #                             | #                        |                |      |      |                  |
| A4EU4-MG                 | PP4EU4                        | F4EU4                    | 1/4            | 0.87 | 0.87 | .175             |
| A5EU4-MG                 |                               |                          | 5/16-1/4       | 1.02 | 0.90 | .175             |
| A5EU5-MG                 |                               |                          | 5/16           | 1.02 | 1.02 | .188             |
| A6EU4-MG                 | PP6EU4                        | F6EU4                    | 3/8-1/4        | 1.02 | 0.90 | .212             |
| A6EU5-MG                 |                               |                          | 3/8-5/16       | 1.02 | 1.02 | .175             |
| A6EU6-MG                 | PP6EU6                        | F6EU6                    | 3/8            | 1.02 | 1.02 | .250             |
| A8EU6-MG                 |                               |                          | 1/2-3/8        | 1.20 | 1.20 | .250             |
| A8EU8-MG                 |                               |                          | 1/2            | 1.20 | 1.20 | .375             |

For nonstandard plastic collet, remove -MG suffix.

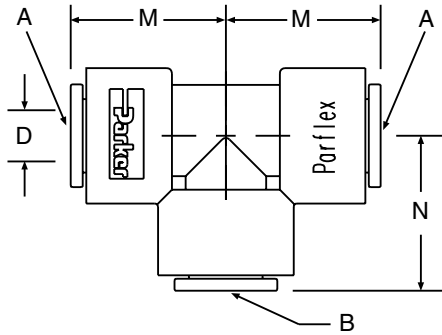
All sizes in inches.

E



# TU - Tee Union

## Tube-to-Tube

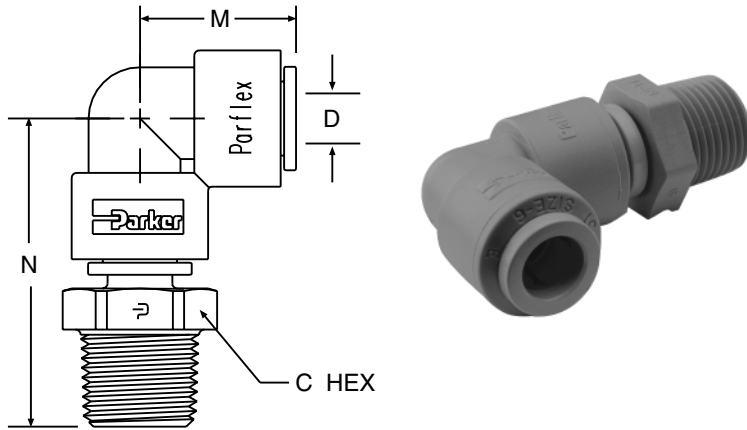


|                 | Gray<br>Acetal<br>Nitrile<br>Seal | White<br>Polypropylene<br>EPDM<br>Seal | Natural<br>Kynar<br>Viton<br>Seal | Nom. Tube O.D.   |                   | M    | N    | D<br>Thru<br>Hole<br>Min. |
|-----------------|-----------------------------------|--|-----------------------------------|------------------|-------------------|------|------|---------------------------|
|                 |                                   |  |                                   | Tube<br>A<br>Run | Tube<br>B<br>Stem |      |      |                           |
| <b>#</b>        | <b>#</b>                          | <b>#</b>                               |                                   |                  |                   |      |      |                           |
| <b>A4TU4-MG</b> | <b>PP4TU4</b>                     | <b>F4TU4</b>                           | 1/4                               | 1/4              | 0.81              | 0.85 | .175 |                           |
| <b>A5TU5-MG</b> |                                   |  | 5/16                              | 5/16             | 1.02              | 1.02 | .188 |                           |
| <b>A6TU4-MG</b> | <b>PP6TU4</b>                     | <b>F6TU4</b>                           | 3/8                               | 1/4              | 1.02              | 1.03 | .175 |                           |
| <b>A6TU6-MG</b> | <b>PP6TU6</b>                     | <b>F6TU6</b>                           | 3/8                               | 3/8              | 1.02              | 1.02 | .290 |                           |
| <b>A8TU8-MG</b> |                                   |  | 1/2                               | 1/2              | 1.20              | 1.20 | .375 |                           |


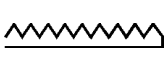
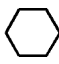
For nonstandard plastic collet, remove -MG suffix.

All sizes in inches.

# MES - Male Elbow Swivel Tube-to-Pipe



**E**

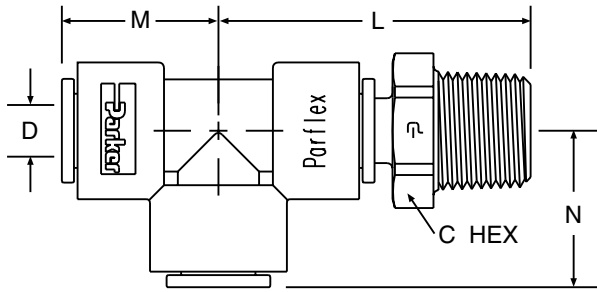
| Gray Acetal Nitrile Seal | White Polypropylene EPDM Seal | Natural Kynar Viton Seal | Nom. Tube O.D.  | NPTF Thread Size   | C Hex   | M    | N    | D Thru Hole Min. |
|--------------------------|-------------------------------|--------------------------|---|--|---|------|------|------------------|
| #                        | #                             | #                        |  |  |  |      |      |                  |
| A4MES2-MG                | PP4MES2                       | F4MES2                   | 1/4   | 1/8  | 9/16  | 0.87 | 1.60 | .175             |
| A4MES4-MG                | PP4MES4                       | F4MES4                   | 1/4   | 1/4  | 11/16   | 0.87 | 1.71 | .175             |
| A4MES6-MG                | PP4MES6                       | F4MES6                   | 1/4   | 3/8  | 13/16   | 0.90 | 1.91 | .212             |
| A5MES2-MG                |                               |                          | 5/16  | 1/8  | 9/16  | 1.02 | 1.78 | .188             |
| A5MES4-MG                |                               |                          | 5/16  | 1/4  | 11/16   | 1.02 | 1.90 | .188             |
| A5MES6-MG                |                               |                          | 5/16  | 3/8  | 13/16   | 1.02 | 1.90 | .188             |
| A6MES2-MG                |                               | F6MES2                   | 3/8   | 1/8  | 9/16  | 1.02 | 1.65 | .175             |
| A6MES4-MG                | PP6MES4                       | F6MES4                   | 3/8   | 1/4  | 13/16   | 1.02 | 1.90 | .250             |
| A6MES6-MG                | PP6MES6                       | F6MES6                   | 3/8   | 3/8  | 13/16   | 1.02 | 1.90 | .250             |
| A8MES4-MG                |                               |                          | 1/2   | 1/4  | 13/16   | 1.20 | 2.10 | .240             |
| A8MES6-MG                |                               |                          | 1/2   | 3/8  | 13/16   | 1.20 | 2.10 | .375             |
| A8MES8-MG                |                               |                          | 1/2   | 1/2  | 1   | 1.20 | 2.32 | .375             |

\*Part consists of elbow union and tube stem adaptor.  
Note: Assemblies with metal gripper collets are permanent.  
Assemblies with plastic collets can be taken apart.

All sizes in inches.



# MRS - Male Run Swivel Tube-to-Pipe



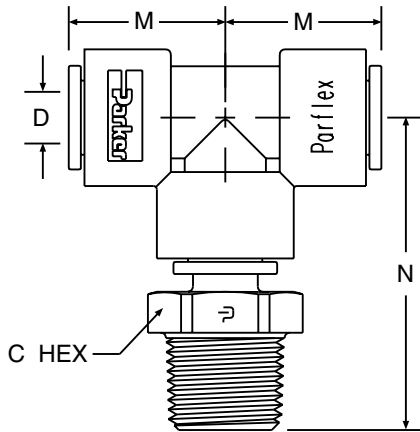
| Gray Acetal Nitrile Seal | White Polypropylene EPDM Seal | Natural Kynar Viton Seal | Nom. Tube O.D. | NPTF Thread Size | C Hex | L    | M    | N    | D Thru Hole Min. |
|--------------------------|-------------------------------|--------------------------|----------------|------------------|-------|------|------|------|------------------|
| #                        | #                             | #                        |                |                  |       |      |      |      |                  |
| A4MRS2-MG                | PP4MRS2                       | F4MRS2                   | 1/4            | 1/8              | 9/16  | 1.55 | 0.81 | 0.85 | .175             |
| A4MRS4-MG                | PP4MRS4                       | F4MRS4                   | 1/4            | 1/4              | 11/16 | 1.67 | 0.81 | 0.85 | .175             |
| A5MRS2-MG                |                               |                          | 5/16           | 1/8              | 9/16  | 1.78 | 1.02 | 1.02 | .188             |
| A5MRS4-MG                |                               |                          | 5/16           | 1/4              | 11/16 | 1.90 | 1.02 | 1.02 | .188             |
| A5MRS6-MG                |                               |                          | 5/16           | 3/8              | 13/16 | 1.90 | 1.02 | 1.02 | .188             |
| A6MRS4-MG                | PP6MRS4                       | F6MRS4                   | 3/8            | 1/4              | 13/16 | 1.90 | 1.02 | 1.02 | .250             |
| A6MRS6-MG                | PP6MRS6                       | F6MRS6                   | 3/8            | 3/8              | 13/16 | 1.90 | 1.02 | 1.02 | .250             |
| A8MRS4-MG                |                               |                          | 1/2            | 1/4              | 13/16 | 2.10 | 1.20 | 1.20 | .240             |
| A8MRS6-MG                |                               |                          | 1/2            | 3/8              | 13/16 | 2.10 | 1.20 | 1.20 | .375             |
| A8MRS8-MG                |                               |                          | 1/2            | 1/2              | 1     | 2.32 | 1.20 | 1.20 | .375             |

\*Part consists of tee union and tube stem adaptor.  
Note: Assemblies with metal gripper collets are permanent.  
Assemblies with plastic collets can be taken apart.

All sizes in inches.



# MTS - Male Tee Swivel Tube-to-Pipe

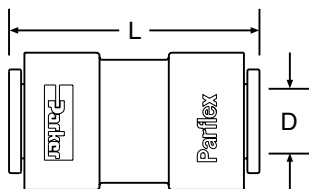


**E**

| Gray Acetal Nitrile Seal | White Polypropylene EPDM Seal | Natural Kynar Viton Seal | Nom. Tube O.D. | NPTF Thread Size | C Hex | M    | N    | D Thru Hole Min. |
|--------------------------|-------------------------------|--------------------------|----------------|------------------|-------|------|------|------------------|
| #                        | #                             | #                        |                |                  |       |      |      |                  |
| A4MTS2-MG                | PP4MTS2                       | F4MTS2                   | 1/4            | 1/8              | 9/16  | 0.81 | 1.60 | .175             |
| A4MTS4-MG                | PP4MTS4                       | F4MTS4                   | 1/4            | 1/4              | 11/16 | 0.81 | 1.71 | .175             |
| A5MTS2-MG                |                               |                          | 5/16           | 1/8              | 9/16  | 1.02 | 1.78 | .188             |
| A5MTS4-MG                |                               |                          | 5/16           | 1/4              | 11/16 | 1.02 | 1.90 | .188             |
| A5MTS6-MG                |                               |                          | 5/16           | 3/8              | 13/16 | 1.02 | 1.90 | .188             |
| A6MTS2-MG                |                               | F6MTS2                   | 3/8            | 1/8              | 9/16  | 1.02 | 1.75 | .175             |
| A6MTS4-MG                | PP6MTS4                       | F6MTS4                   | 3/8            | 1/4              | 13/16 | 1.02 | 1.90 | .250             |
| A6MTS6-MG                | PP6MTS6                       | F6MTS6                   | 3/8            | 3/8              | 13/16 | 1.02 | 1.90 | .250             |
| A8MTS4-MG                |                               |                          | 1/2            | 1/4              | 13/16 | 1.20 | 2.10 | .240             |
| A8MTS6-MG                |                               |                          | 1/2            | 3/8              | 13/16 | 1.20 | 2.10 | .375             |
| A8MTS8-MG                |                               |                          | 1/2            | 1/2              | 1     | 1.20 | 2.32 | .375             |

\*Part consists of tee union and tube stem adaptor.  
Note: Assemblies with metal gripper collets are permanent.  
Assemblies with plastic collets can be taken apart.

# UC - Union Connector Tube-to-Tube



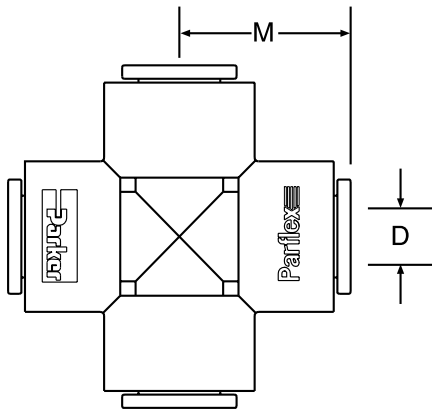
| Gray Acetal Nitrile Seal | White Polypropylene EPDM Seal | Natural Kynar Viton Seal | Nom. Tube O.D. | L Overall Length | D Thru Hole Min. |
|--------------------------|-------------------------------|--------------------------|----------------|------------------|------------------|
| #                        | #                             | #                        |                |                  |                  |
| A4UC4-MG                 | PP4UC4                        | F4UC4                    | 1/4            | 1.49             | .175             |
| A5UC4-MG                 |                               |                          | 5/16-1/4       | 1.70             | .175             |
| A5UC5-MG                 |                               |                          | 5/16           | 1.70             | .188             |
| A6UC4-MG                 | PP6UC4                        | F6UC4                    | 3/8-1/4        | 1.70             | .175             |
| A6UC5-MG                 |                               |                          | 3/8-5/16       | 1.70             | .188             |
| A6UC6-MG                 | PP6UC6                        | F6UC6                    | 3/8            | 1.70             | .250             |
| A8UC5-MG                 |                               |                          | 1/2-5/16       | 1.90             | .188             |
| A8UC6-MG                 |                               |                          | 1/2-3/8        | 1.90             | .250             |
| A8UC8-MG                 |                               |                          | 1/2            | 1.91             | .375             |

All sizes in inches.

For nonstandard plastic collet, remove -MG suffix.



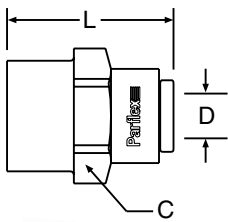
## CU - Cross Union Tube-to-Tube



| Gray Acetal Nitrile Seal | White Polypropylene EPDM Seal | Natural Kynar Viton Seal | Nom. Tube O.D. | L Overall Length | D Thru Hole Min. |
|--------------------------|-------------------------------|--------------------------|----------------|------------------|------------------|
| #                        | #                             | #                        |                |                  |                  |
| A4CU4-MG                 |                               |                          | 1/4            | .91              | .175             |
| A6CU6-MG                 |                               |                          | 3/8            | 1.08             | .250             |

For nonstandard plastic collet, remove -MG suffix.

## FA - Faucet Adapter Tube-to-Faucet



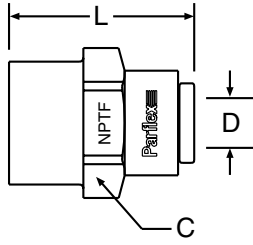
| Gray Acetal Nitrile Seal | White Polypropylene EPDM Seal | Natural Kynar Viton Seal | Nom. Tube O.D. | UNS-2B Thread Size | C Hex | L Overall Length | D Thru Hole Min. |
|--------------------------|-------------------------------|--------------------------|----------------|--------------------|-------|------------------|------------------|
| #                        | #                             | #                        |                |                    |       |                  |                  |
| A4FA7-MG                 | PP4FA7                        | F4FA7                    | 1/4            | 7/16-24            | 23/32 | 1.32             | .190             |
| A5FA7-MG                 |                               |                          | 5/16           | 7/16-24            | 13/16 | 1.41             | .190             |
| A6FA7-MG                 | PP6FA7                        | F6FA7                    | 3/8            | 7/16-24            | 13/16 | 1.41             | .190             |

For nonstandard plastic collet, remove -MG suffix.

All sizes in inches.

# FC - Female Connector

## Tube-to-Pipe

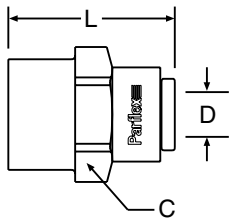


| Gray Acetal Nitrile Seal | White Polypropylene EPDM Seal | Natural Kynar Viton Seal | Nom. Tube O.D. | NPTF Thread Size | C Hex | L Overall Length | D Thru Hole Min. |
|--------------------------|-------------------------------|--------------------------|----------------|------------------|-------|------------------|------------------|
| #                        | #                             | #                        |                |                  |       |                  |                  |
| A4FC2-MG                 | PP4FC2                        | F4FC2                    | 1/4            | 1/8              | 11/16 | 1.20             | .175             |
| A4FC4-MG                 | PP4FC4                        | F4FC4                    | 1/4            | 1/4              | 23/32 | 1.32             | .175             |
| A5FC4-MG                 |                               |                          | 5/16           | 1/4              | 13/16 | 1.41             | .188             |
| A5FC6-MG                 |                               |                          | 5/16           | 3/8              | 1     | 1.50             | .188             |
| A6FC4-MG                 | PP6FC4                        | F6FC4                    | 3/8            | 1/4              | 13/16 | 1.41             | .250             |
| A6FC6-MG                 | PP6FC6                        | F6FC6                    | 3/8            | 3/8              | 1     | 1.50             | .250             |
| A6FC8-MG                 |                               |                          | 3/8            | 1/2              | 1-1/8 | 1.52             | .250             |
| A8FC6-MG                 |                               |                          | 1/2            | 3/8              | 1-1/8 | 1.60             | .375             |
| A8FC8-MG                 |                               |                          | 1/2            | 1/2              | 1-1/8 | 1.75             | .375             |

For nonstandard plastic collet, remove -MG suffix.

# FF - 45° Female Flare

## Tube-to-Flare



| Gray Acetal Nitrile Seal | White Polypropylene EPDM Seal | Natural Kynar Viton Seal | Nom. Tube O.D. | UNF-2B Thread Size | C Hex | L Overall Length | D Thru Hole Min. |
|--------------------------|-------------------------------|--------------------------|----------------|--------------------|-------|------------------|------------------|
| #                        | #                             | #                        |                |                    |       |                  |                  |
| A4FF4-MG                 | PP4FF4                        | F4FF4                    | 1/4            | 7/16-20            | 23/32 | 1.32             | .190             |
| A6FF4-MG                 |                               | F6FF4                    | 3/8            | 7/16-20            | 13/16 | 1.41             | .190             |
| A6FF6-MG                 | PP6FF6                        | F6FF6                    | 3/8            | 5/8-18             | 1     | 1.50             | .250             |

For nonstandard plastic collet, remove -MG suffix.

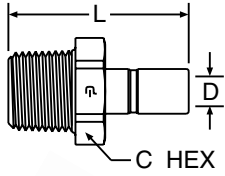
All sizes in inches.

E



## TMC - Tube Stem Adapter

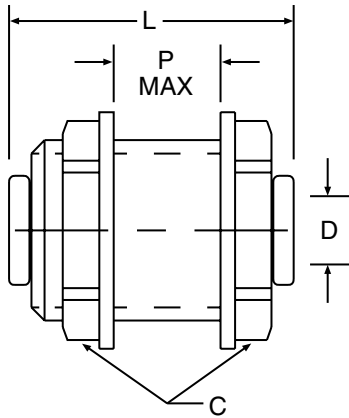
### Tube Stem-to-Pipe



| Gray Acetal | White Polypropylene | Natural Kynar | Tube Stem O.D. | NPTF Thread Size | C Hex | L Overall Length | D Thru Hole Min. |
|-------------|---------------------|---------------|----------------|------------------|-------|------------------|------------------|
| #           | #                   | #             |                |                  |       |                  |                  |
| A4TMC2      | PP4TMC2             | F4TMC2        | 1/4            | 1/8              | 9/16  | 1.44             | .175             |
| A4TMC4      | PP4TMC4             | F4TMC4        | 1/4            | 1/4              | 11/16 | 1.56             | .175             |
| A5TMC2      |                     |               | 5/16           | 1/8              | 9/16  | 1.55             | .188             |
| A5TMC4      |                     |               | 5/16           | 1/4              | 11/16 | 1.67             | .188             |
| A5TMC6      |                     |               | 5/16           | 3/8              | 13/16 | 1.67             | .188             |
| A6TMC4      | PP6TMC4             | F6TMC4        | 3/8            | 1/4              | 13/16 | 1.70             | .250             |
| A6TMC6      | PP6TMC6             | F6TMC6        | 3/8            | 3/8              | 13/16 | 1.70             | .250             |
| A8TMC4      |                     |               | 1/2            | 1/4              | 13/16 | 1.82             | .240             |
| A8TMC6      |                     |               | 1/2            | 3/8              | 13/16 | 1.82             | .375             |
| A8TMC8      |                     |               | 1/2            | 1/2              | 1     | 2.04             | .375             |

## BU - Bulkhead Union

### Tube-to-Tube



| Gray Acetal Nitrile Seal | White Polypropylene EPDM Seal | Natural Kynar Viton Seal | Nom. Tube O.D. | C Hex  | L Overall Length | P Max. Wall Thk. | D Thru Hole Min. | Bulkhead Hole Drill Size |
|--------------------------|-------------------------------|--------------------------|----------------|--------|------------------|------------------|------------------|--------------------------|
| #                        | #                             | #                        |                |        |                  |                  |                  |                          |
| A4BU4-MG                 | PP4BU4                        | F4BU4                    | 1/4            | 15/16  | 1.50             | .50              | .175             | 7/8                      |
| A5BU5-MG                 |                               |                          | 5/16           | 1-1/16 | 1.75             | .62              | .188             | 1                        |
| A6BU4-MG                 | PP6BU4                        |                          | 3/8-1/4        | 1-1/16 | 1.75             | .62              | .175             | 1                        |
| A6BU6-MG                 | PP6BU6                        | F6BU6                    | 3/8            | 1-1/16 | 1.75             | .62              | .250             | 1                        |
| A8BU8-MG                 |                               |                          | 1/2            | 1-1/4  | 2.04             | .70              | .375             | 1-1/8                    |

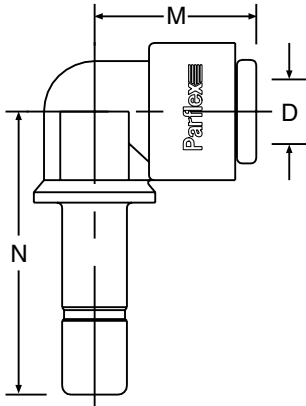
For nonstandard plastic collet, remove -MG suffix.

All sizes in inches.



# TEU - Tube Elbow Union

## Tube-to-Tube Stem



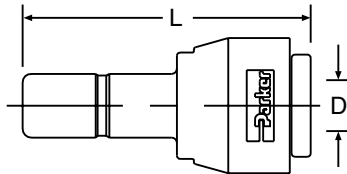
| Gray Acetal Nitrile Seal | White Polypropylene EPDM Seal | Natural Kynar Viton Seal | Nom. Tube O.D. | Tube Stem O.D. | M    | N    | D Thru Hole Min. |
|--------------------------|-------------------------------|--------------------------|----------------|----------------|------|------|------------------|
| #                        | #                             | #                        |                |                |      |      |                  |
| A4TEU4-MG                | PP4TEU4                       | F4TEU4                   | 1/4            | 1/4            | .84  | 1.21 | .125             |
| A4TEU6-MG                |                               | F4TEU6                   | 1/4            | 3/8            | .84  | 1.35 | .125             |
| A5TEU5-MG                |                               |                          | 5/16           | 5/16           | 1.03 | 1.40 | .188             |
| A6TEU4-MG                |                               | F6TEU4                   | 3/8            | 1/4            | 1.03 | 1.29 | .125             |
| A6TEU6-MG                | PP6TEU6                       | F6TEU6                   | 3/8            | 3/8            | 1.03 | 1.64 | .250             |

For nonstandard plastic collet, remove -MG suffix.



# RD - Tube Reducer

## Tube-to-Tube Stem



| Gray Acetal Nitrile Seal | White Polypropylene EPDM Seal | Natural Kynar Viton Seal | Nom. Tube O.D. | Stem O.D. | L    | D Thru Hole Min. |
|--------------------------|-------------------------------|--------------------------|----------------|-----------|------|------------------|
| #                        | #                             | #                        |                |           |      |                  |
| A4RD5-MG                 | PP4RD5                        |                          | 1/4            | 5/16      | 1.62 | .18              |
| A4RD6-MG                 | PP4RD6                        |                          | 1/4            | 3/8       | 1.65 | .18              |
| A5RD6-MG                 |                               |                          | 5/16           | 3/8       | 1.78 | .25              |
| A5RD8-MG                 |                               |                          | 5/16           | 1/2       | 1.90 | .25              |
| A6RD8-MG                 |                               |                          | 3/8            | 1/2       | 1.90 | .25              |

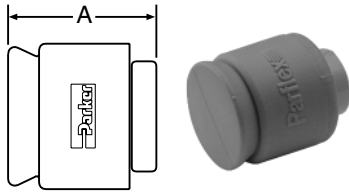
For nonstandard plastic collet, remove -MG suffix.



All sizes in inches.



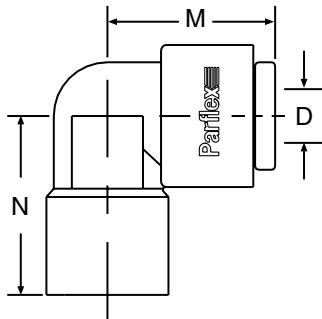
## CAP - Tube Cap



| Gray Acetal Nitrile Seal | White Polypropylene EPDM Seal | Natural Kynar Viton Seal | Nom. Tube O.D. | L Overall Length |
|--------------------------|-------------------------------|--------------------------|----------------|------------------|
| #                        | #                             | #                        |                |                  |
| A4CAP-MG                 | PP4CAP                        | F4CAP                    | 1/4            | 0.77             |
| A6CAP-MG                 | PP6CAP                        |                          | 3/8            | .88              |

For nonstandard plastic collet, remove -MG suffix.

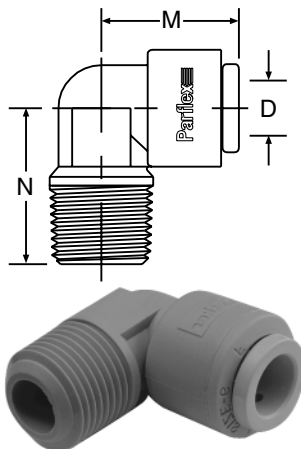
## FE - Female Elbow Tube-to-Tube



| Gray Acetal Nitrile Seal | White Polypropylene EPDM Seal | Natural Kynar Viton Seal | Nom. Tube O. D. | NPTF Thread Size | M    | N    | D Thru Hole Min. |
|--------------------------|-------------------------------|--------------------------|-----------------|------------------|------|------|------------------|
| #                        | #                             | #                        |                 |                  |      |      |                  |
| A4FE4-MG                 |                               |                          | 1/4             | 1/4              | .84  | 1.00 | .18              |
| A6FE4-MG                 |                               |                          | 3/8             | 1/4              | 1.03 | 1.00 | .25              |
| A6FE6-MG                 |                               |                          | 3/8             | 3/8              | 1.03 | 1.00 | .25              |

For nonstandard plastic collet, remove -MG suffix.

## ME - Male Elbow Tube-to-Pipe



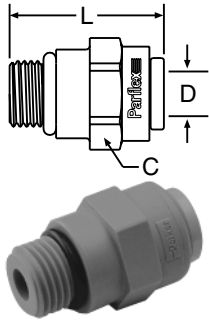
| Gray Acetal Nitrile Seal | White Polypropylene EPDM Seal | Natural Kynar Viton Seal | Nom. Tube O.D. | NPTF Thread Size | M    | N    | D Thru Hole Min. |
|--------------------------|-------------------------------|--------------------------|----------------|------------------|------|------|------------------|
| #                        | #                             | #                        |                |                  |      |      |                  |
| A4ME2-MG                 | PP4ME2                        | F4ME2                    | 1/4            | 1/8              | 0.84 | 0.94 | .175             |
| A4ME4-MG                 | PP4ME4                        | F4ME4                    | 1/4            | 1/4              | 0.84 | 0.94 | .175             |
| A4ME6-MG                 | PP4ME6                        | F4ME6                    | 1/4            | 3/8              | 0.84 | 1.04 | .175             |
| A5ME4-MG                 |                               |                          | 5/16           | 1/4              | 1.03 | 1.08 | .175             |
| A5ME6-MG                 |                               |                          | 5/16           | 3/8              | 1.03 | 1.06 | .188             |
| A6ME4-MG                 | PP6ME4                        | F6ME4                    | 3/8            | 1/4              | 1.03 | 1.08 | .250             |
| A6ME6-MG                 | PP6ME6                        | F6ME6                    | 3/8            | 3/8              | 1.03 | 1.06 | .250             |

For nonstandard plastic collet, remove -MG suffix.

All sizes in inches.



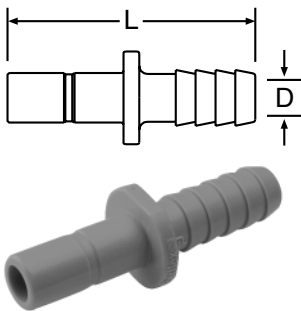
## ST - Straight Thread Tube-to-Male O-Ring Boss



| Gray Acetal<br>Nitrile Seal | White Polypropylene<br>EPDM Seal | Natural Kynar<br>Viton Seal | Nom. Tube O.D. | UNF-2A Thread Size | C Hex | L Overall Length | D Thru Hole Min. |
|-----------------------------|----------------------------------|-----------------------------|----------------|--------------------|-------|------------------|------------------|
| #                           | #                                | #                           |                |                    |       |                  |                  |
| A6ST9-MG                    |                                  | F6ST9                       | 3/8            | 9/16—18            | 9/16  | 1.39             | .250             |

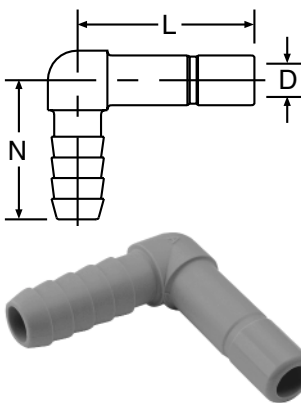
For nonstandard plastic collet, remove -MG suffix.

## TCB - Tube-to-Barb Connector



| Gray Acetal | White Polypropylene | Natural Kynar | Tube Stem O.D. | Tube I.D. | L Overall Length | D Thru Hole Min. |
|-------------|---------------------|---------------|----------------|-----------|------------------|------------------|
| #           | #                   | #             |                |           |                  |                  |
| A4TCB4      | PP4TCB4             | F4TCB4        | 1/4            | 1/4       | 1.67             | .140             |
| A6TCB4      |                     | F6TCB4        | 3/8            | 1/4       | 1.82             | .140             |
| A6TCB6      | PP6TCB6             | F6TCB6        | 3/8            | 3/8       | 1.98             | .250             |
| A8TCB6      |                     |               | 1/2            | 3/8       | 2.10             | .250             |
| A8TCB8      |                     |               | 1/2            | 1/2       | 2.10             | .375             |

## TEB - Tube Elbow Barb Connector

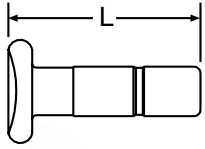


| Gray Acetal | White Polypropylene | Natural Kynar | Tube Stem O.D. | Tube I.D. | L    | N    | D Thru Hole Min. |
|-------------|---------------------|---------------|----------------|-----------|------|------|------------------|
| #           | #                   | #             |                |           |      |      |                  |
| A4TEB4      | PP4TEB4             | F4TEB4        | 1/4            | 1/4       | 0.89 | 1.00 | .140             |
| A6TEB6      | PP6TEB6             | F6TEB6        | 3/8            | 3/8       | 1.34 | 1.21 | .250             |
| A8TEB8      |                     |               | 1/2            | 1/2       | 1.30 | 1.30 | .390             |

All sizes in inches.



## TPL - Plug

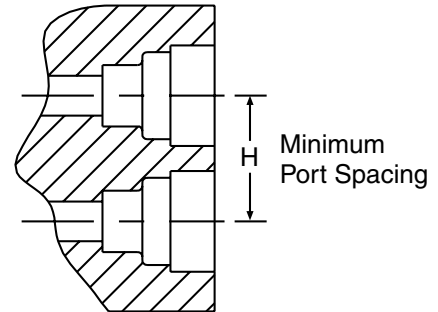
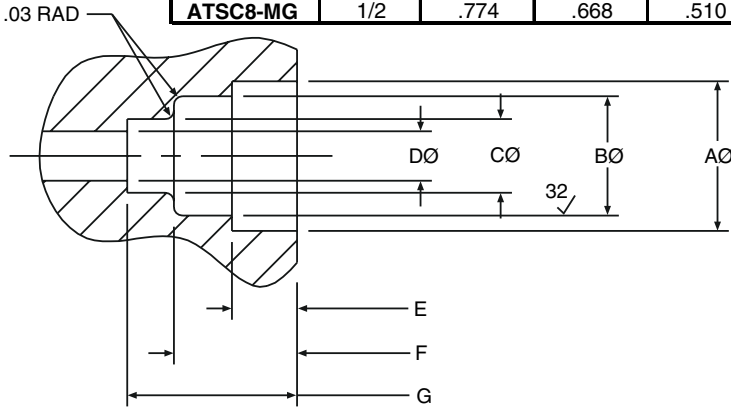


| Gray Acetal | White Polypropylene | Natural Kynar | Fitting Size | L Overall Length |
|-------------|---------------------|---------------|--------------|------------------|
| #           | #                   | #             |              |                  |
| A4TPL       | PP4TPL              | F4TPL         | 1/4          | 0.88             |
| A6TPL       | PP6TPL              | F6TPL         | 3/8          | 1.45             |
| A8TPL       |                     |               | 1/2          | 1.50             |

## TSC - Cartridge Insert



| Part Number with Nitrile Seal | Nom. Tube O.D. | A* Diameter ±.002 | B Diameter ±.002 | C Diameter ±.002 | D Diameter ±.002 | E Depth ±.002 | F Depth ±.002 | G Depth ±.002 | H* Centerline of Ports ±.002 |
|-------------------------------|----------------|-------------------|------------------|------------------|------------------|---------------|---------------|---------------|------------------------------|
| #                             |                |                   |                  |                  |                  |               |               |               |                              |
| ATSC4-MG                      | 1/4            | .528              | .421             | .260             | .175             | .230          | .435          | .600          | .670                         |
| ATSC6-MG                      | 3/8            | .632              | .545             | .385             | .250             | .280          | .455          | .705          | .790                         |
| ATSC8-MG                      | 1/2            | .774              | .668             | .510             | .375             | .315          | .510          | .810          | 1.250                        |



### Parker TrueSeal™ Cartridge Inserts:

Allow you to machine or mold a tube connection into your equipment or components. By using cartridge inserts, you will reduce your material and assembly costs, reduce potential leak paths, and give your equipment a new, clean profile by eliminating the need for threaded connections. Part number ATSC4 consists of 1 o-ring, 1 cartridge, and 1 collet.

\*Cartridge inserts are rated at 300 psi. Test results are measured using Noryl® as the receiving material. Other materials may produce different results. Consult the Parflex Division for required dimensions when using filled and unfilled polypropylene, Abs, and nylon.

### Assembly Instructions:

- Step 1**—Machine or mold the receiving orifice as per the above dimensions.
- Step 2**—Place the cartridge insert squarely onto the prepared port opening making sure that the barbs of the cartridge are going into the hole and the lettering on the face of the cartridge is visible.
- Step 3**—Using a rubber mallet or press, insert the cartridge into the first gland orifice until its face is flush with the top surface of the port.
- Step 4**—Insert the o-ring into the cartridge and seat it evenly into the second gland orifice.
- Step 5**—Insert the collet into the cartridge opening.
- Step 6**—Insert tubing.

NORYL® is a registered trademark of the General Electric Co.

All sizes in inches.



# Polypropylene Ball Valves

For proven leak-free performance, specify **Parflex® Polypropylene Ball Valves**. Their corrosion-resistant, all-plastic design makes them ideal for water filtration units, coffee and beverage machines and a wide variety of other fluid applications. Polypropylene material meets all FDA and NSF 51 requirements for food contact and potable water.

**Features/Benefits:**

- Precision molded, all-plastic design is leak free and corrosion resistant.
- Polypropylene material offers a wider chemical acceptance range, as well as a wide temperature range.
- Bi-directional flow maximizes productivity.
- Full flow design reduces pressure drop across the valve.
- Special o-ring seal ensures a reliable leak-tight connection.
- TrueSeal™ connection reduces potential leaks.

**Specifications:**

- Temperature range: 0°F to 225°F.
- O-ring seal material: Nitrile.
- NSF 51 listed.
- Pressure rated to 150 psi with a 600 psi burst pressure.

**Advantages:**

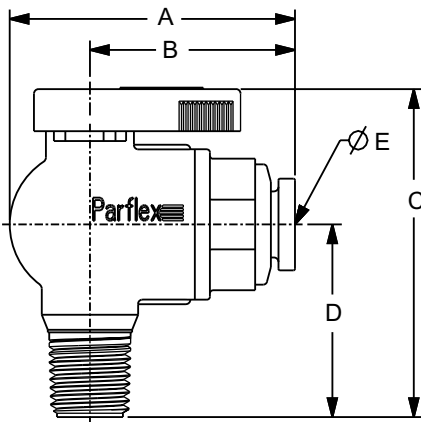
- Reduce costs—Built-in TrueSeal™ connection eliminates the need for a secondary fitting.
- Save space—Low-profile design allows for easy assembly and access where space is at a premium.

**Assembly Instructions:**

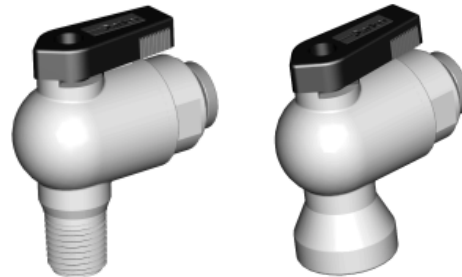
1. Inspect the mating threads for debris or damage. Remove any old Teflon tape or sealant on previously used threads. If threads are damaged, replace with new adapter before proceeding.
2. Apply 2 to 3 wraps of Teflon tape, Parker TrueSealant or an NSF/FDA approved silicon sealant. Do not use Plumbers Putty or Pipe Dope. These chemically react with plastic materials and could cause a failure.
3. Align ball valve to mating thread to ensure cross threading does not occur.
4. Screw ball valve onto mating thread 3 to 5 turns. This should be sufficient to properly seal the threads.
5. Pressurize system and check for leaks.



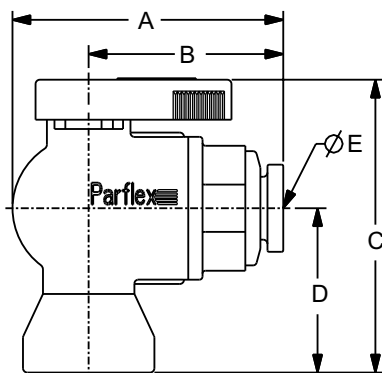
## VME - Valve Male Elbow



| Part No.   | Nom. Tube O.D. | NPTF Thread Size | A    | B    | C    | D    | øE Min. Thru Hole |
|------------|----------------|------------------|------|------|------|------|-------------------|
| #          |                |                  |      |      |      |      |                   |
| PP4VME2-MG | 1/4            | 1/8              | 1.74 | 1.21 | 2.00 | 1.10 | .19               |
| PP4VME4-MG | 1/4            | 1/4              | 1.74 | 1.21 | 2.18 | 1.28 | .19               |
| PP4VME6-MG | 1/4            | 3/8              | 1.74 | 1.21 | 2.18 | 1.28 | .19               |
| PP4VME8-MG | 1/4            | 1/2              | 1.74 | 1.21 | 2.37 | 1.47 | .19               |
| PP6VME2-MG | 3/8            | 1/8              | 1.85 | 1.32 | 2.00 | 1.10 | .25               |
| PP6VME4-MG | 3/8            | 1/4              | 1.85 | 1.32 | 2.18 | 1.28 | .25               |
| PP6VME6-MG | 3/8            | 3/8              | 1.85 | 1.32 | 2.18 | 1.28 | .25               |
| PP6VME8-MG | 3/8            | 1/2              | 1.85 | 1.32 | 2.37 | 1.47 | .25               |



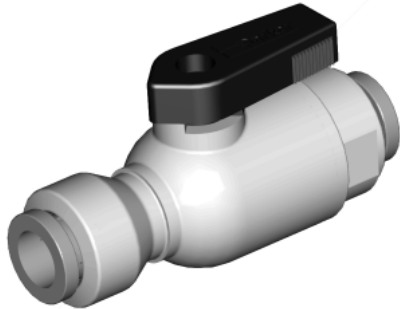
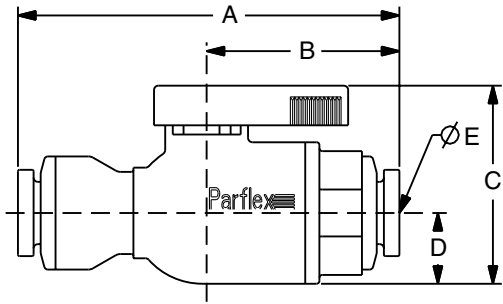
## VFE - Valve Female Elbow



| Part No.   | Nom. Tube O.D. | NPTF Thread Size | A    | B    | C    | D    | øE Min. Thru Hole |
|------------|----------------|------------------|------|------|------|------|-------------------|
| #          |                |                  |      |      |      |      |                   |
| PP4VFE2-MG | 1/4            | 1/8              | 1.74 | 1.21 | 1.82 | 0.92 | .19               |
| PP4VFE4-MG | 1/4            | 1/4              | 1.74 | 1.21 | 2.05 | 1.15 | .19               |
| PP4VFE6-MG | 1/4            | 3/8              | 1.74 | 1.21 | 2.18 | 1.28 | .19               |
| PP6VFE2-MG | 3/8            | 1/8              | 1.85 | 1.32 | 1.82 | 0.92 | .25               |
| PP6VFE4-MG | 3/8            | 1/4              | 1.85 | 1.32 | 2.05 | 1.15 | .25               |
| PP6VFE6-MG | 3/8            | 3/8              | 1.85 | 1.32 | 2.18 | 1.28 | .25               |

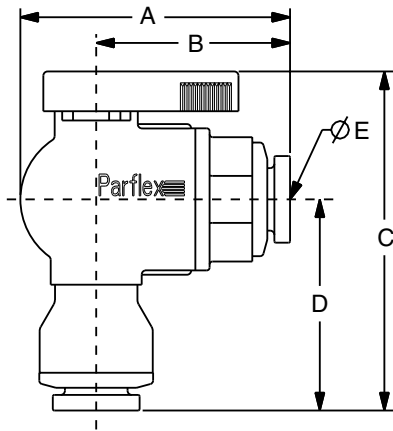


## VUC - Valve Union Connector



| Part No.   | Tube Size | Tube Size | A    | B    | C   | D   | øE Min. Thru Hole |
|------------|-----------|-----------|------|------|-----|-----|-------------------|
| <b>#</b>   |           |           |      |      |     |     |                   |
| PP4VUC4-MG | 1/4       | 1/4       | 2.51 | 1.21 | 1.4 | 0.5 | .19               |
| PP4VUC6-MG | 1/4       | 3/8       | 2.62 | 1.21 | 1.4 | 0.5 | .19               |
| PP6VUC4-MG | 3/8       | 1/4       | 2.56 | 1.32 | 1.4 | 0.5 | .19               |
| PP6VUC6-MG | 3/8       | 3/8       | 2.67 | 1.32 | 1.4 | 0.5 | .25               |

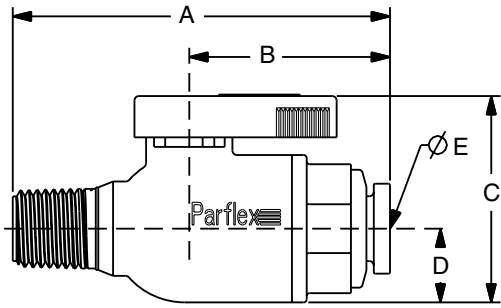
## VEU - Valve Elbow Union



| Part No.   | Tube Size | Tube Size | A    | B    | C    | D    | øE Min. Thru Hole |
|------------|-----------|-----------|------|------|------|------|-------------------|
| <b>#</b>   |           |           |      |      |      |      |                   |
| PP4VEU4-MG | 1/4       | 1/4       | 1.74 | 1.21 | 2.29 | 1.39 | .19               |
| PP4VEU6-MG | 1/4       | 3/8       | 1.74 | 1.21 | 2.34 | 1.44 | .11               |
| PP6VEU4-MG | 3/8       | 1/4       | 1.85 | 1.32 | 2.29 | 1.39 | .19               |
| PP6VEU6-MG | 3/8       | 3/8       | 1.85 | 1.32 | 2.34 | 1.44 | .25               |



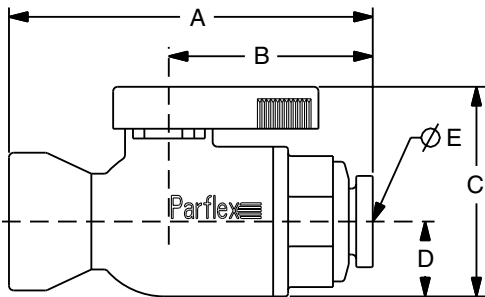
## VMC - Valve Male Connector



| Part No.   | Tube Size | NPTF Thread Size | A    | B    | C   | D   | øE Min. Thru Hole |
|------------|-----------|------------------|------|------|-----|-----|-------------------|
| #          |           |                  |      |      |     |     |                   |
| PP4VMC2-MG | 1/4       | 1/8              | 2.22 | 1.21 | 1.4 | 0.5 | .19               |
| PP4VMC4-MG | 1/4       | 1/4              | 2.40 | 1.21 | 1.4 | 0.5 | .19               |
| PP4VMC6-MG | 1/4       | 3/8              | 2.40 | 1.21 | 1.4 | 0.5 | .19               |
| PP4VMC8-MG | 1/4       | 1/2              | 2.59 | 1.21 | 1.4 | 0.5 | .19               |
| PP6VMC2-MG | 3/8       | 1/8              | 2.33 | 1.32 | 1.4 | 0.5 | .25               |
| PP6VMC4-MG | 3/8       | 1/4              | 2.51 | 1.32 | 1.4 | 0.5 | .25               |
| PP6VMC6-MG | 3/8       | 3/8              | 2.51 | 1.32 | 1.4 | 0.5 | .25               |
| PP6VMC8-MG | 3/8       | 1/2              | 2.70 | 1.32 | 1.4 | 0.5 | .25               |



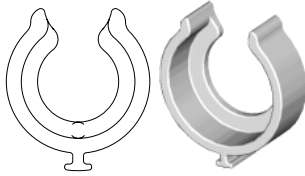
## VFC - Valve Female Connector



| Part No.   | Tube Size | NPTF Thread Size | A    | B    | C   | D   | øE Min. Thru Hole |
|------------|-----------|------------------|------|------|-----|-----|-------------------|
| #          |           |                  |      |      |     |     |                   |
| PP4VFC2-MG | 1/4       | 1/8              | 2.04 | 1.21 | 1.4 | 0.5 | .19               |
| PP4VFC4-MG | 1/4       | 1/4              | 2.27 | 1.21 | 1.4 | 0.5 | .19               |
| PP4VFC6-MG | 1/4       | 3/8              | 2.40 | 1.21 | 1.4 | 0.5 | .19               |
| PP6VFC2-MG | 3/8       | 1/8              | 2.15 | 1.32 | 1.4 | 0.5 | .25               |
| PP6VFC4-MG | 3/8       | 1/4              | 2.38 | 1.32 | 1.4 | 0.5 | .25               |
| PP6VFC6-MG | 3/8       | 3/8              | 2.51 | 1.32 | 1.4 | 0.5 | .25               |



## SC - Safety Clip (Patent Pending)



Standard color is black or blue.  
Other colors available upon request.

| Part Number | Part Number | For Nominal Tube O.D. |
|-------------|-------------|-----------------------|
| #           | #           |                       |
| SC-4        | SC-4-B      | 1/4                   |
| SC-5        | SC-5-B      | 5/16                  |
| SC-6        | SC-6-B      | 3/8                   |
| SC-8        | SC-8-B      | 1/2                   |

## TS - Tube Supports



To be used with soft durometer tubing.

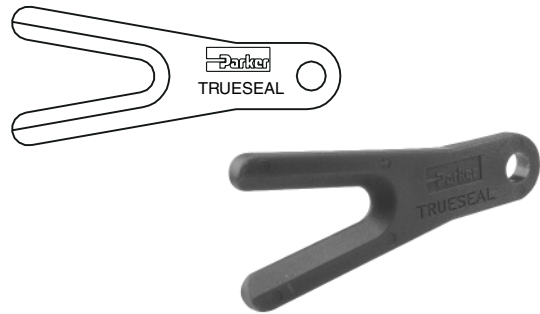
| Nylon Part Number | Polypropylene Part Number |
|-------------------|---------------------------|
| #                 | #                         |
| N4TS3             | P4TS3                     |
| N5TS3             | P5TS3                     |
| N6TS4             | P6TS4                     |
| N8TS6             | P8TS6                     |

## PTS - Pipe Thread Sealant



NSF-51 listed silicone.

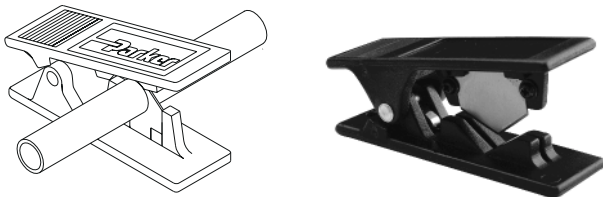
## AQRT - Quick Release Tool



Makes disconnection of tube adapters and tubing a breeze.

## PTC - Plastic Tube Cutter

PTC-001-RB



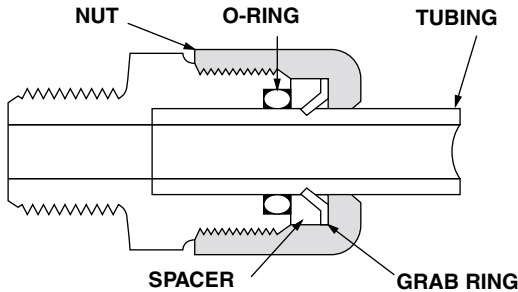
Plastic tube cutter and replacement blades.

All sizes in inches.



# Fast & Tite Thermoplastic Fittings

Fast & Tite fittings are the most complete line of plastic fittings for thermoplastic tubing in the industry.



Fast & Tite thermoplastic tube fittings from Parker will prove to be the answer to your tubing connector needs. Patented Fast & Tite fittings install in seconds without tools and provide a tight, sure, leak proof seal without clamps or adjustments. A unique 302 stainless steel grab ring, for tube retention, coupled with a Nitrile O-Ring for positive seal, assures good tube connection with only hand tight assembly. A plastic grab ring is also available upon special request. Vibration or tube movement will not break the seal and cause leakage. Preassembled in either highly inert polypropylene, or strong, durable nylon, Fast & Tite fittings are the answer to full flow thermoplastic tubing system requirements.

When necessary, Fast & Tite fittings can be disassembled by hand for fast system drainage. Fittings are completely reusable. Parts are

easily replaced. O-Rings are standard size and universally available. (For applications requiring other than Nitrile O-Rings, consult your Fast & Tite distributor.)

Use Fast & Tite fittings with Parker Parflex tubing or other plastic, glass or metal tubing for low pressure or vacuum lines up to the pressure limits shown below.

All ingredients in Fast & Tite fittings meet FDA and NSF requirements for food contact and potable water.

### Working Pressures for Fast & Tite Fittings

| Tube O. D., in. | Air-Oil-Water Pressure in PSI |              |               |
|-----------------|-------------------------------|--------------|---------------|
|                 | Up to 75°F                    | 76° to 125°F | 126° to 175°F |
| 1/4             | 300                           | 300          | 300           |
| 5/16            | 300                           | 300          | 300           |
| 3/8             | 250                           | 250          | 150           |
| 1/2             | 200                           | 200          | 150           |
| 5/8             | 150                           | 100          | 50            |

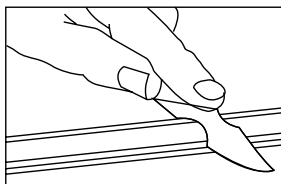
Ratings are based on use with copper tubing, and in all cases represent the maximum recommended working pressure of the fitting only. Working pressures (vs. temperatures) of other types of tubing may limit the tube and fitting assembly to pressures lower than shown above. [Consult factory for recommendations on applications other than shown above.](#)

### Temperature Range:

Black/White Polypropylene: 0°F (-18°C) to +212°F (+100°C).  
White Nylon: -40°F (-40°C) to +200°F (+93°C)

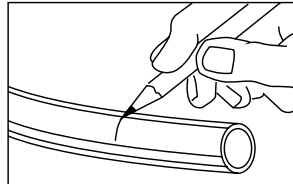
## Fast Assembly

### Step 1.



Cut the tube squarely and remove any burrs.

### Step 2.



Mark from end of tube the length of insertion. (See Table)

| Tube Size  | Insertion Length with Tube Support in. | Insertion Length without Tube Support in. |
|------------|--|---|
| 1/4 O. D.  | 5/8                                    | 9/16                                      |
| 5/16 O. D. | 5/8                                    | 9/16                                      |
| 3/8 O. D.  | 13/16                                  | 3/4                                       |
| 1/2 O. D.  | 7/8                                    | 13/16                                     |
| 5/8 O. D.  | 1                                      | 15/16                                     |

### Step 3.

Loosen nut on fitting until three threads are visible. Fittings for glass tubes must be disassembled and the grab ring removed.

### Step 4.

Moisten end of the tube with water. Push the tube **Straight** into fitting until it bottoms on the fitting's shoulder. Tighten nut by hand. Additional tightening should not be necessary, but 1/4 additional turn may be added if desired. **Do not overtighten** nut as the threads will strip and the fitting will not function properly. A proper assembly will not show the insertion mark extending beyond the nut. If the insertion mark is visible, then steps 1 thru 4 must be repeated.

### Step 5.

When using clear vinyl tubing or urethane tubing, it is necessary to use a **TS** tube support. Disassemble the fitting and place the nut, grab ring, spacer and tube support, in that order on the tube. Locate the grab ring at the insertion mark as shown. Seat the O-ring in the body, then proceed with Step 4.

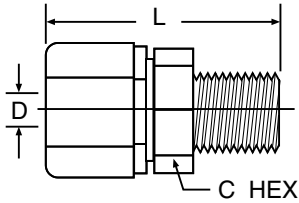
**Note:** Provide adequate fail-safe mechanisms such as leakage detection sensors, automatic shut-off controls or other industry and code appropriate fail-safe devices in the design of your water-handling appliance to protect against personal injury and property damage. Plastic fittings containing an o-ring that are used in water applications should be replaced at least every five years or more frequently depending on the environment and severity of the application.





# MC - Male Connector

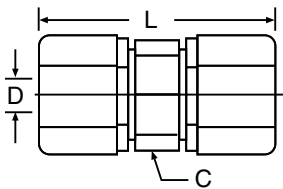
Tube to male pipe



| White Polypropylene Part Number | Black Polypropylene Part Number | White Nylon Part Number | Nom. Tube O. D. | NPTF Thread Size | C Hex | L Overall Length | D Thru-Hole Min. |
|---------------------------------|---------------------------------|-------------------------|-----------------|------------------|-------|------------------|------------------|
| #                               | #                               | #                       |                 |                  |       |                  |                  |
| W4MC2                           | P4MC2                           | N4MC2                   | 1/4             | 1/8              | 11/16 | 1.38             | .170             |
| W4MC4                           | P4MC4                           | N4MC4                   | 1/4             | 1/4              | 11/16 | 1.51             | .170             |
| W4MC6                           | P4MC6                           | N4MC6                   | 1/4             | 3/8              | 11/16 | 1.48             | .170             |
| W5MC2                           | P5MC2                           | N5MC2                   | 5/16            | 1/8              | 11/16 | 1.38             | .170             |
| W5MC4                           | P5MC4                           | N5MC4                   | 5/16            | 1/4              | 11/16 | 1.50             | .250             |
| W6MC2                           | P6MC2                           | N6MC2                   | 3/8             | 1/8              | 13/16 | 1.50             | .170             |
| W6MC4                           | P6MC4                           | N6MC4                   | 3/8             | 1/4              | 13/16 | 1.67             | .250             |
| W6MC6                           | P6MC6                           | N6MC6                   | 3/8             | 3/8              | 13/16 | 1.67             | .250             |
| W6MC8                           | P6MC8                           | N6MC8                   | 3/8             | 1/2              | 1     | 1.78             | .250             |
| W6MC12                          | P6MC12                          | N6MC12                  | 3/8             | 3/4              | 1     | 1.84             | .250             |
| W8MC2                           | P8MC2                           | N8MC2                   | 1/2             | 1/8              | 1     | 1.61             | .170             |
| W8MC4                           | P8MC4                           | N8MC4                   | 1/2             | 1/4              | 1     | 1.74             | .250             |
| W8MC6                           | P8MC6                           | N8MC6                   | 1/2             | 3/8              | 1     | 1.74             | .375             |
| W8MC8                           | P8MC8                           | N8MC8                   | 1/2             | 1/2              | 1     | 1.87             | .375             |
| W8MC12                          | P8MC12                          | N8MC12                  | 1/2             | 3/4              | 1     | 1.89             | .375             |
| W10MC2                          | P10MC2                          | N10MC2                  | 5/8             | 1/8              | 1-1/8 | 1.75             | .170             |
| W10MC4                          | P10MC4                          | N10MC4                  | 5/8             | 1/4              | 1-1/8 | 1.90             | .250             |
| W10MC6                          | P10MC6                          | N10MC6                  | 5/8             | 3/8              | 1-1/8 | 1.90             | .375             |
| W10MC8                          | P10MC8                          | N10MC8                  | 5/8             | 1/2              | 1-1/8 | 2.01             | .500             |
| W10MC12                         | P10MC12                         | N10MC12                 | 5/8             | 3/4              | 1-1/8 | 2.04             | .500             |

# UC - Union Connector

Tube to tube

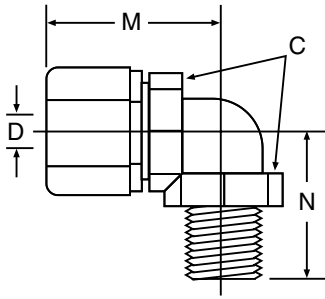


| White Polypropylene Part Number | Black Polypropylene Part Number | White Nylon Part Number | Nom. Tube O. D. | C Hex | L Overall Length | D Thru-Hole Min. |
|---------------------------------|---------------------------------|-------------------------|-----------------|-------|------------------|------------------|
| #                               | #                               | #                       |                 |       |                  |                  |
| W4UC4                           | P4UC4                           | N4UC4                   | 1/4             | 11/16 | 1.62             | .170             |
| W5UC4                           | P5UC4                           | N5UC4                   | 5/16-1/4        | 11/16 | 1.62             | .170             |
| W5UC5                           | P5UC5                           | N5UC5                   | 5/16            | 11/16 | 1.62             | .190             |
| W6UC4                           | P6UC4                           | N6UC4                   | 3/8-1/4         | 13/16 | 1.80             | .170             |
| W6UC5                           | P6UC5                           | N6UC5                   | 3/8-5/16        | 13/16 | 1.80             | .190             |
| W6UC6                           | P6UC6                           | N6UC6                   | 3/8             | 13/16 | 1.92             | .250             |
| W8UC6                           | P8UC6                           | N8UC6                   | 1/2-3/8         | 1     | 1.95             | .250             |
| W8UC8                           | P8UC8                           | N8UC8                   | 1/2             | 1     | 2.03             | .375             |
| W10UC6                          | P10UC6                          | N10UC6                  | 5/8-3/8         | 1-1/8 | 2.19             | .250             |
| W10UC8                          | P10UC8                          | N10UC8                  | 5/8-1/2         | 1-1/8 | 2.24             | .375             |
| W10UC10                         | P10UC10                         | N10UC10                 | 5/8             | 1-1/8 | 2.40             | .500             |



# ME - Male Elbow

Tube to male pipe

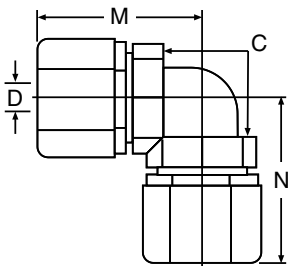


| White Polypropylene Part Number | Black Polypropylene Part Number | White Nylon Part Number | Nom. Tube O. D. | NPTF Thread Size | C Hex  | M    | N    | D Thru-Hole Min. |
|---------------------------------|---------------------------------|-------------------------|-----------------|------------------|--------|------|------|------------------|
| #                               | #                               | #                       |                 |                  |        |      |      |                  |
| W4ME2                           | P4ME2                           | N4ME2                   | 1/4             | 1/8              | 3/4    | 1.06 | 0.81 | .170             |
| W4ME4                           | P4ME4                           | N4ME4                   | 1/4             | 1/4              | 3/4    | 1.06 | 1.02 | .170             |
| W4ME6                           | P4ME6                           | N4ME6                   | 1/4             | 3/8              | 3/4    | 1.06 | 1.02 | .170             |
| W5ME2                           | P5ME2                           | N5ME2                   | 5/16            | 1/8              | 3/4    | 1.06 | 0.81 | .193             |
| W5ME4                           | P5ME4                           | N5ME4                   | 5/16            | 1/4              | 3/4    | 1.06 | 1.02 | .193             |
| W5ME6                           | P5ME6                           | N5ME6                   | 5/16            | 3/8              | 3/4    | 1.06 | 1.02 | .193             |
| W6ME4                           | P6ME4                           | N6ME4                   | 3/8             | 1/4              | 7/8    | 1.28 | 1.12 | .250             |
| W6ME6                           | P6ME6                           | N6ME6                   | 3/8             | 3/8              | 7/8    | 1.28 | 1.12 | .250             |
| W6ME8                           | P6ME8                           | N6ME8                   | 3/8             | 1/2              | 1-1/8  | 1.28 | 1.34 | .250             |
| W6ME12                          | P6ME12                          | N6ME12                  | 3/8             | 3/4              | 1-3/16 | 1.59 | 1.40 | .250             |
| W8ME4                           | P8ME4                           | N8ME4                   | 1/2             | 1/4              | 1-1/16 | 1.48 | 1.22 | .250             |
| W8ME6                           | P8ME6                           | N8ME6                   | 1/2             | 3/8              | 1-1/16 | 1.56 | 1.21 | .375             |
| W8ME8                           | P8ME8                           | N8ME8                   | 1/2             | 1/2              | 1-1/16 | 1.56 | 1.34 | .375             |
| W8ME12                          | P8ME12                          | N8ME12                  | 1/2             | 3/4              | 1-1/8  | 1.50 | 1.40 | .375             |
| W10ME8                          | P10ME8                          | N10ME8                  | 5/8             | 1/2              | 1-3/16 | 1.72 | 1.40 | .500             |



# EU - Elbow Union

Tube to tube

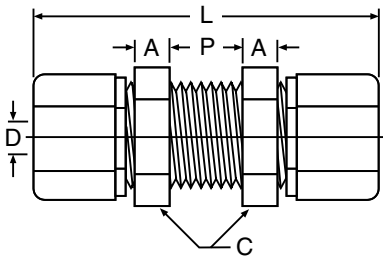


| White Polypropylene Part Number | Black Polypropylene Part Number | White Nylon Part Number | Nom. Tube O. D. | C Hex  | M    | N    | D Thru-Hole Min. |
|---------------------------------|---------------------------------|-------------------------|-----------------|--------|------|------|------------------|
| #                               | #                               | #                       |                 |        |      |      |                  |
| W4EU4                           | P4EU4                           | N4EU4                   | 1/4             | 3/4    | 1.06 | 1.06 | .170             |
| W5EU4                           | P5EU4                           | N5EU4                   | 5/16-1/4        | 3/4    | 1.06 | 1.06 | .170             |
| W5EU5                           | P5EU5                           | N5EU5                   | 5/16            | 3/4    | 1.06 | 1.06 | .193             |
| W6EU4                           | P6EU4                           | N6EU4                   | 3/8-1/4         | 7/8    | 1.06 | 1.28 | .170             |
| W6EU5                           | P6EU5                           | N6EU5                   | 3/8-5/16        | 7/8    | 1.06 | 1.28 | .170             |
| W6EU6                           | P6EU6                           | N6EU6                   | 3/8             | 7/8    | 1.28 | 1.28 | .250             |
| W8EU6                           | P8EU6                           | N8EU6                   | 1/2-3/8         | 1-1/16 | 1.37 | 1.56 | .250             |
| W8EU8                           | P8EU8                           | N8EU8                   | 1/2             | 1-1/16 | 1.56 | 1.56 | .375             |
| W10EU10                         | P10EU10                         | N10EU10                 | 5/8             | 1-3/16 | 1.72 | 1.72 | .500             |



# BU - Bulkhead Union

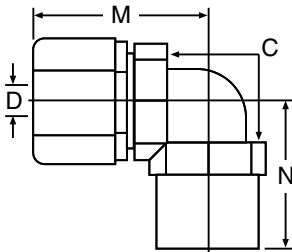
Tube to tube



| White Polypropylene Part Number | Black Polypropylene Part Number | White Nylon Part Number | Nom. Tube O. D. | A Ref. | C Hex  | L Overall Length | P Max. | D Thru-Hole Min. | Bulkhead Hole Drill Size |
|---------------------------------|---------------------------------|-------------------------|-----------------|--------|--------|------------------|--------|------------------|--------------------------|
| #                               | #                               | #                       |                 |        |        |                  |        |                  |                          |
| W4BU4                           | P4BU4                           | N4BU4                   | 1/4             | 1/4    | 13/16  | 2-11/64          | 3/8    | .170             | 21/32                    |
| W5BU5                           | P5BU5                           | N5BU5                   | 5/16            | 1/4    | 13/16  | 2-11/64          | 3/8    | .187             | 21/32                    |
| W6BU6                           | P6BU6                           | N6BU6                   | 3/8             | 9/32   | 15/16  | 2-39/64          | 1/2    | .250             | 25/32                    |
| W8BU8                           | P8BU8                           | N8BU8                   | 1/2             | 5/16   | 1-5/32 | 2-3/4            | 1/2    | .375             | 31/32                    |

# FE - Female Elbow

Tube to female pipe

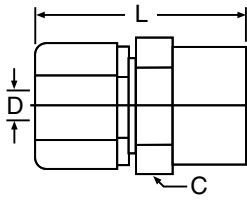


| White Polypropylene Part Number | Black Polypropylene Part Number | White Nylon Part Number | Nom. Tube O. D. | NPTF Thread Size | C Hex | M    | N    | D Thru-Hole Min. |
|---------------------------------|---------------------------------|-------------------------|-----------------|------------------|-------|------|------|------------------|
| #                               | #                               | #                       |                 |                  |       |      |      |                  |
| W4FE2                           | P4FE2                           | N4FE2                   | 1/4             | 1/8              | 11/16 | 1.10 | 0.84 | .170             |
| W4FE4                           | P4FE4                           | N4FE4                   | 1/4             | 1/4              | 11/16 | 1.10 | 0.97 | .170             |
| W5FE2                           | P5FE2                           | N5FE2                   | 5/16            | 1/8              | 11/16 | 1.10 | 0.84 | .193             |
| W6FE4                           | P6FE4                           | N6FE4                   | 3/8             | 1/4              | 13/16 | 1.30 | 1.06 | .250             |
| W6FE6                           | P6FE6                           | N6FE6                   | 3/8             | 3/8              | 13/16 | 1.30 | 1.03 | .250             |
| W8FE6                           | P8FE6                           | N8FE6                   | 1/2             | 3/8              | 1     | 1.50 | 1.16 | .375             |
| W8FE8                           | P8FE8                           | N8FE8                   | 1/2             | 1/2              | 1     | 1.50 | 1.27 | .375             |
| W10FE8                          | P10FE8                          | N10FE8                  | 5/8             | 1/2              | 1-1/8 | 1.70 | 1.34 | .500             |



# FC - Female Connector

Tube to female pipe

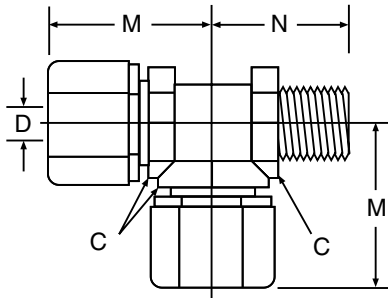


| White Polypropylene Part Number | Black Polypropylene Part Number | White Nylon Part Number | Nom. Tube O. D. | NPTF Thread Size | C Hex | L Overall Length | D Thru-Hole Min. |
|---------------------------------|---------------------------------|-------------------------|-----------------|------------------|-------|------------------|------------------|
| #                               | #                               | #                       |                 |                  |       |                  |                  |
| W4FC2                           | P4FC2                           | N4FC2                   | 1/4             | 1/8              | 11/16 | 1.30             | .170             |
| W4FC4                           | P4FC4                           | N4FC4                   | 1/4             | 1/4              | 11/16 | 1.40             | .170             |
| W6FC4                           | P6FC4                           | N6FC4                   | 3/8             | 1/4              | 1     | 1.57             | .250             |
| W6FC6                           | P6FC6                           | N6FC6                   | 3/8             | 3/8              | 1-1/8 | 1.57             | .250             |
| W6FC8                           | P6FC8                           | N6FC8                   | 3/8             | 1/2              | 1-1/8 | 1.67             | .250             |
| W8FC6                           | P8FC6                           | N8FC6                   | 1/2             | 3/8              | 1     | 1.66             | .375             |
| W8FC8                           | P8FC8                           | N8FC8                   | 1/2             | 1/2              | 1-1/8 | 1.78             | .375             |
| W10FC8                          | P10FC8                          | N10FC8                  | 5/8             | 1/2              | 1-1/8 | 1.95             | .500             |



# MR - Male Run Tee

Tube to male pipe

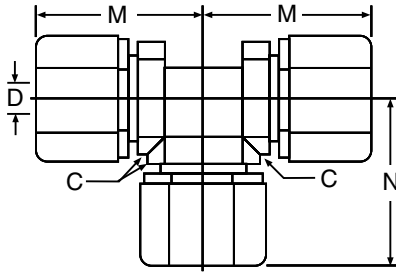


| White Polypropylene Part Number | Black Polypropylene Part Number | White Nylon Part Number | Nom. Tube O. D. | NPTF Thread Size | C Hex | M    | N    | D Thru-Hole Min. |
|---------------------------------|---------------------------------|-------------------------|-----------------|------------------|-------|------|------|------------------|
| #                               | #                               | #                       |                 |                  |       |      |      |                  |
| W4MR2                           | P4MR2                           | N4MR2                   | 1/4             | 1/8              | 11/16 | 1.09 | 0.89 | .170             |
| W6MR4                           | P6MR4                           | N6MR4                   | 3/8             | 1/4              | 13/16 | 1.30 | 1.17 | .250             |
| W8MR6                           | P8MR6                           | N8MR6                   | 1/2             | 3/8              | 1     | 1.46 | 1.28 | .375             |
| W10MR8                          | P10MR8                          | N10MR8                  | 5/8             | 1/2              | 1-1/8 | 1.68 | 1.50 | .500             |



# TU - Tee Union

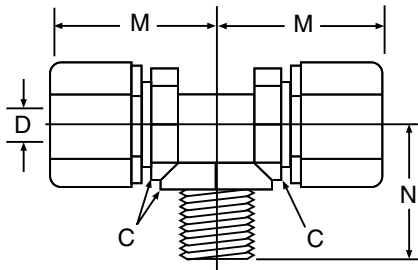
Tube to tube



| White Polypropylene Part Number | Black Polypropylene Part Number | White Nylon Part Number | Nom. Tube O. D. | C Hex  | M    | N    | D Thru-Hole Min. |
|---------------------------------|---------------------------------|-------------------------|-----------------|--------|------|------|------------------|
| #                               | #                               | #                       |                 |        |      |      |                  |
| W4TU4                           | P4TU4                           | N4TU4                   | 1/4             | 11/16  | 1.09 | 1.09 | .170             |
| W5TU5                           | P5TU5                           | N5TU5                   | 5/16            | 11/16  | 1.09 | 1.09 | .187             |
| W6TU6                           | P6TU6                           | N6TU6                   | 3/8             | 13/16  | 1.30 | 1.30 | .250             |
| W8TU6                           | P8TU6                           | N8TU6                   | 1/2-3/8         | 1      | 1.46 | 1.39 | .250             |
| W8TU8                           | P8TU8                           | N8TU8                   | 1/2             | 1      | 1.46 | 1.46 | .375             |
| W10TU6                          | P10TU6                          | N10TU6                  | 5/8-3/8         | 1-1/8  | 1.68 | 1.46 | .250             |
| W10TU10                         | P10TU10                         | N10TU10                 | 5/8             | 1-3/16 | 1.68 | 1.68 | .500             |

# MT - Male Branch Tee

Tube to male pipe



| White Polypropylene Part Number | Black Polypropylene Part Number | White Nylon Part Number | Nom. Tube O. D. | NPTF Thread Size | C Hex | M    | N    | D Thru-Hole Min. |
|---------------------------------|---------------------------------|-------------------------|-----------------|------------------|-------|------|------|------------------|
| #                               | #                               | #                       |                 |                  |       |      |      |                  |
| W4MT2                           | P4MT2                           | N4MT2                   | 1/4             | 1/8              | 11/16 | 1.09 | 0.89 | .170             |
| W4MT4                           | P4MT4                           | N4MT4                   | 1/4             | 1/4              | 11/16 | 1.09 | 1.06 | .170             |
| W5MT2                           | P5MT2                           | N5MT2                   | 5/16            | 1/8              | 11/16 | 1.09 | 0.89 | .170             |
| W5MT4                           | P5MT4                           | N5MT4                   | 5/16            | 1/4              | 11/16 | 1.09 | 1.06 | .187             |
| W6MT4                           | P6MT4                           | N6MT4                   | 3/8             | 1/4              | 13/16 | 1.30 | 1.12 | .250             |
| W6MT6                           | P6MT6                           | N6MT6                   | 3/8             | 3/8              | 13/16 | 1.30 | 1.10 | .250             |
| W8MT6                           | P8MT6                           | N8MT6                   | 1/2             | 3/8              | 1     | 1.46 | 1.22 | .375             |
| W8MT8                           | P8MT8                           | N8MT8                   | 1/2             | 1/2              | 1     | 1.46 | 1.43 | .375             |
| W10MT8                          | P10MT8                          | N10MT8                  | 5/8             | 1/2              | 1-1/8 | 1.68 | 1.41 | .500             |

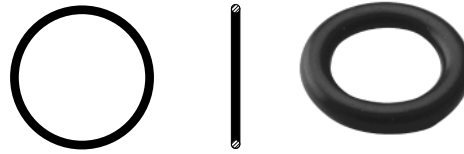


## GR - Grab Ring (Stainless or Plastic)

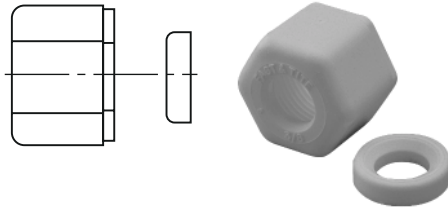


| Stainless Grab Ring Part Number | Plastic Grab Ring Part Number | O-Ring Part Number | For Nom. Tube O. D. |
|---------------------------------|-------------------------------|--------------------|---------------------|
| #                               | #                             | #                  |                     |
| 4GR                             | 4GRP                          | 4OR                | 1/4                 |
| 5GR                             | 5GRP                          | 5OR                | 5/16                |
| 6GR                             | 6GRP                          | 6OR                | 3/8                 |
| 8GR                             | 8GRP                          | 8OR                | 1/2                 |
| 10GR                            | 10GRP                         | 10OR               | 5/8                 |

## OR - O-Ring

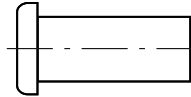


## NS - Nut and Spacer Sets



| White Polypropylene Part Number | Black Polypropylene Part Number | White Nylon Part Number | For Nom. Tube O. D. |
|---------------------------------|---------------------------------|-------------------------|---------------------|
| #                               | #                               | #                       |                     |
| W4NS                            | P4NS                            | N4NS                    | 1/4                 |
| W5NS                            | P5NS                            | N5NS                    | 5/16                |
| W6NS                            | P6NS                            | N6NS                    | 3/8                 |
| W8NS                            | P8NS                            | N8NS                    | 1/2                 |
| W10NS                           | P10NS                           | N10NS                   | 5/8                 |

## TS - Tube Support



| Polypropylene Part Number | Nylon Part Number | For Tube Part Number |
|---------------------------|-------------------|----------------------|
| #                         | #                 |                      |
| P4TS3                     | N4TS3             | PV43                 |
| P5TS3                     | N5TS3             | PV53                 |
| P6TS4                     | N6TS4             | PV64                 |
| P8TS6                     | N8TS6             | PV86                 |
| P10TS8                    | N10TS8            | PV108                |

E



# Par-Barb Thermoplastic Fittings

Par-Barb fittings are precision injection molded from high-strength, chemically inert, thermoplastic materials.

The specially engineered four-barb design generates the maximum gripping and sealing power when combined with a hose clamp. The unique barb design requires the tube or hose to expand slightly to accept the fitting, providing a positive seal on the barbs.

Par-Barb fittings are widely used with Parflex clear vinyl tubing, urethane tubing and a variety of rubber tubing and hose. Par-Barb fittings meet FDA and NSF specifications for food contact and potable water.\*

Par-Barb is recommended in medical, pollution control, food and beverage applications. Other uses include irrigation, instrumentation, reverse osmosis and deionized water systems.

**Temperature range:**

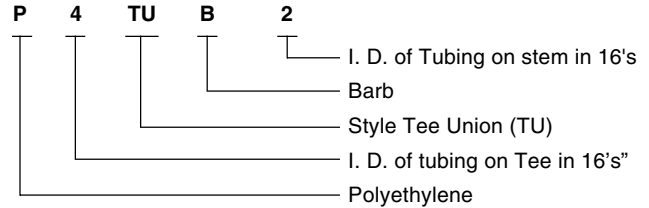
Black Polyethylene: -65°F (-54°C) to +190°F (+88°C.)

White Nylon: -40°F (-40°C) to +200°F (+93°C.)

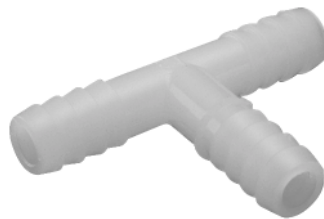
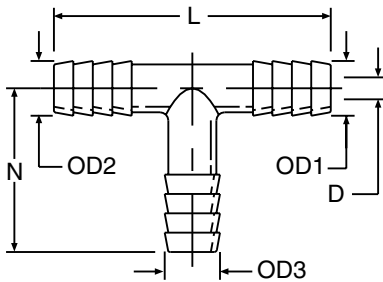
**Working Pressures:**

Par-Barb fittings are generally used in systems where pressures do not exceed 125 psi. When used in excess of 125 psi, Par-Barb fittings, in all sizes, should be tested by the customer in his particular application. Operating pressures of Par-Barb fittings are governed by ambient and fluid temperatures, type of fluid conveyed, hose or tubing used, clamping mechanism employed and conditions of mechanical abuse.

**How to order Par-barb fittings:**



## TUB - Tee Union

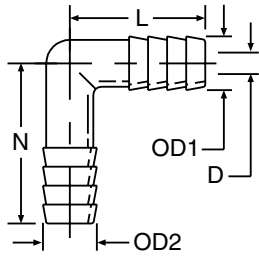


| Black High Density Linear Polyethylene Part Number | White Nylon Part Number | Tube or Hose I. D. 1 & 2 | Tube or Hose I. D. 3 | O. D. 1 & 2 | O. D. 3 | L     | N     | D Flow Diameter |
|--|-------------------------|--------------------------|----------------------|-------------|---------|-------|-------|-----------------|
| #  | #                       |                          |                      |             |         |       |       |                 |
| P2TUB2   | N2TUB2                  | 1/8                      | 1/8                  | .141        | .141    | 1.203 | 0.594 | .078            |
| P3TUB2   | N3TUB2                  | 3/16                     | 1/8                  | .205        | .141    | 1.941 | 1.256 | .078            |
| P3TUB3   | N3TUB3                  | 3/16                     | 3/16                 | .245        | .245    | 1.941 | 1.256 | .106            |
| P4TUB2   | N4TUB2                  | 1/4                      | 1/8                  | .308        | .141    | 2.004 | 1.256 | .078            |
| P4TUB3   | N4TUB3                  | 1/4                      | 3/16                 | .308        | .245    | 2.004 | 1.256 | .106            |
| P4TUB4   | N4TUB4                  | 1/4                      | 1/4                  | .308        | .308    | 2.004 | 1.256 | .153            |
| P5TUB5   | N5TUB5                  | 5/16                     | 5/16                 | .361        | .361    | 2.058 | 1.256 | .215            |
| P6TUB3   | N6TUB3                  | 3/8                      | 3/16                 | .425        | .245    | 1.941 | 1.256 | .106            |
| P6TUB4   | N6TUB4                  | 3/8                      | 1/4                  | .425        | .308    | 2.121 | 1.256 | .153            |
| P6TUB6   | N6TUB6                  | 3/8                      | 3/8                  | .425        | .425    | 2.134 | 1.256 | .247            |
| P6TUB8   | N6TUB8                  | 3/8                      | 1/2                  | .425        | .550    | 2.121 | 1.256 | .247            |
| P8TUB4   | N8TUB4                  | 1/2                      | 1/4                  | .550        | .308    | 2.246 | 1.256 | .153            |
| P8TUB6   | N8TUB6                  | 1/2                      | 3/8                  | .550        | .425    | 2.248 | 1.256 | .247            |
| P8TUB8   | N8TUB8                  | 1/2                      | 1/2                  | .550        | .550    | 2.248 | 1.256 | .372            |
| P10TUB8  | N10TUB8                 | 5/8                      | 1/2                  | .644        | .550    | 2.340 | 1.256 | .372            |
| P10TUB10   | N10TUB10                | 5/8                      | 5/8                  | .644        | .644    | 2.340 | 1.256 | .465            |

\*P2UCB2, P2TUB2, P12HPN6 are not FDA compliant.



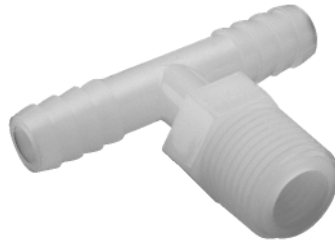
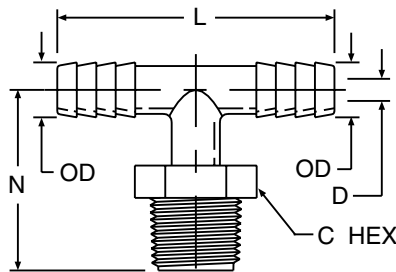
## EUB - Elbow Union



| Black High Density Linear Polyethylene Part Number<br># | White Nylon Part Number<br># | Tube or Hose I. D. |     | O. D. 1 | O. D. 2 | L     | N     | D Flow Diameter |
|---|------------------------------|--------------------|-----|---------|---------|-------|-------|-----------------|
|   |                              | 1                  | 2   |         |         |       |       |                 |
| P4EUB4  | N4EUB4                       | 1/4                | 1/4 | .308    | .308    | 1.002 | 1.256 | .153            |
| P6EUB6  | N6EUB6                       | 3/8                | 3/8 | .425    | .425    | 1.060 | 1.256 | .247            |
| P8EUB4  | N8EUB4                       | 1/2                | 1/4 | .550    | .308    | 1.002 | 1.256 | .153            |
| P8EUB6  | N8EUB6                       | 1/2                | 3/8 | .550    | .425    | 1.060 | 1.256 | .247            |
| P8EUB8  | N8EUB8                       | 1/2                | 1/2 | .550    | .550    | 1.123 | 1.256 | .372            |
| P10EUB10  | N10EUB10                     | 5/8                | 5/8 | .644    | .644    | 1.170 | 1.256 | .465            |
| P12EUB12  | N12EUB12                     | 3/4                | 3/4 | .788    | .788    | 1.242 | 1.256 | .606            |



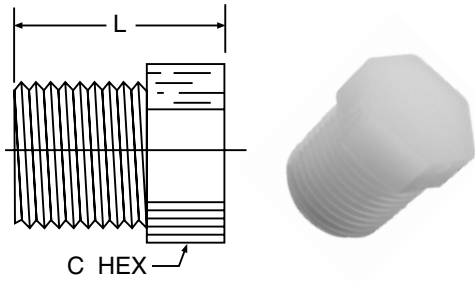
## MTB - Tee Male Branch



| Black High Density Linear Polyethylene Part Number<br># | White Nylon Part Number<br># | Tube or Hose I.D. | NPTF Pipe Thread Size | O.D. | C Hex | L     | N     | D Flow Diameter |
|---|------------------------------|-------------------|-----------------------|------|-------|-------|-------|-----------------|
| P3MTB2  | N3MTB2                       | 3/16              | 1/8                   | .245 | 7/16  | 1.941 | 1.187 | .106            |
| P3MTB4  | N3MTB4                       | 3/16              | 1/4                   | .245 | 9/16  | 1.941 | 1.406 | .106            |
| P4MTB2  | N4MTB2                       | 1/4               | 1/8                   | .308 | 7/16  | 2.004 | 1.187 | .153            |
| P4MTB4  | N4MTB4                       | 1/4               | 1/4                   | .308 | 9/16  | 2.004 | 1.406 | .153            |
| P4MTB6  | N4MTB6                       | 1/4               | 3/8                   | .308 | 11/16 | 2.004 | 1.436 | .153            |
| P6MTB4  | N6MTB4                       | 3/8               | 1/4                   | .425 | 9/16  | 2.121 | 1.406 | .247            |
| P6MTB6  | N6MTB6                       | 3/8               | 3/8                   | .425 | 11/16 | 2.121 | 1.436 | .247            |
| P6MTB8  | N6MTB8                       | 3/8               | 1/2                   | .425 | 7/8   | 2.121 | 1.626 | .247            |
| P8MTB4  | N8MTB4                       | 1/2               | 1/4                   | .550 | 9/16  | 2.246 | 1.406 | .281            |
| P8MTB6  | N8MTB6                       | 1/2               | 3/8                   | .550 | 11/16 | 2.246 | 1.436 | .372            |
| P8MTB8  | N8MTB8                       | 1/2               | 1/2                   | .550 | 7/8   | 2.246 | 1.626 | .372            |
| P12MTB12  | N12MTB12                     | 3/4               | 3/4                   | .788 | 1-1/8 | 2.484 | 1.636 | .606            |

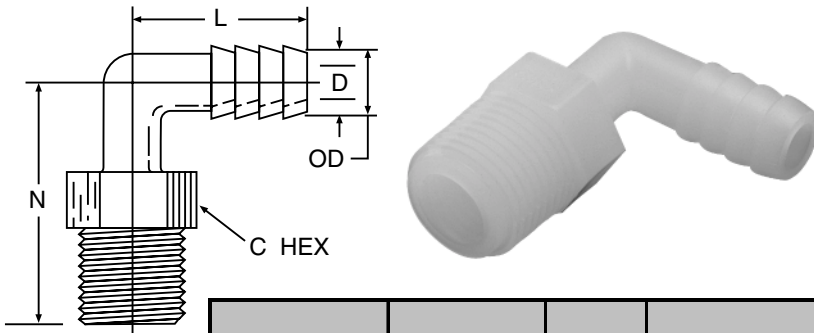


# HPL - Hex Head Pipe Plug



| Black High Density Linear Polyethylene Part Number | White Nylon Part Number | NPTF Pipe Thread | C Hex | L Overall Length |
|--|-------------------------|------------------|-------|------------------|
| #  | #                       |                  |       |                  |
| P2HPL  | N2HPL                   | 1/8              | 7/16  | 0.660            |
| P4HPL  | N4HPL                   | 1/4              | 9/16  | 0.880            |
| P6HPL  | N6HPL                   | 3/8              | 11/16 | 0.905            |
| P8HPL  | N8HPL                   | 1/2              | 7/8   | 1.092            |
| P12HPL   | N12HPL                  | 3/4              | 1-1/8 | 1.115            |

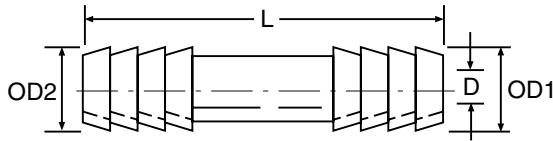
# MEB - Male Elbow Connector



| Black High Density Linear Polyethylene Part Number | White Nylon Part Number | Tube or Hose I. D. | NPTF Pipe Thread | C Hex | O. D. | L     | N     | D Flow Diameter |
|--|-------------------------|--------------------|------------------|-------|-------|-------|-------|-----------------|
| #  | #                       |                    |                  |       |       |       |       |                 |
| P3MEB2   | N3MEB2                  | 3/16               | 1/8              | 7/16  | .245  | 0.971 | 1.186 | .106            |
| P3MEB4   | N3MEB4                  | 3/16               | 1/4              | 9/16  | .245  | 0.971 | 1.406 | .106            |
| P4MEB2   | N4MEB2                  | 1/4                | 1/8              | 7/16  | .308  | 1.002 | 1.186 | .153            |
| P4MEB4   | N4MEB4                  | 1/4                | 1/4              | 9/16  | .308  | 1.002 | 1.406 | .153            |
| P4MEB6   | N4MEB6                  | 1/4                | 3/8              | 11/16 | .308  | 1.002 | 1.436 | .153            |
| P4MEB8   | N4MEB8                  | 1/4                | 1/2              | 7/8   | .308  | 1.002 | 1.626 | .153            |
| P4MEB12  | N4MEB12                 | 1/4                | 3/4              | 1-1/8 | .308  | 1.002 | 1.636 | .153            |
| P6MEB2   | N6MEB2                  | 3/8                | 1/8              | 7/16  | .425  | 1.060 | 1.186 | .247            |
| P6MEB4   | N6MEB4                  | 3/8                | 1/4              | 9/16  | .425  | 1.060 | 1.406 | .247            |
| P6MEB6   | N6MEB6                  | 3/8                | 3/8              | 11/16 | .425  | 1.060 | 1.436 | .247            |
| P6MEB8   | N6MEB8                  | 3/8                | 1/2              | 7/8   | .425  | 1.060 | 1.626 | .247            |
| P6MEB12  | N6MEB12                 | 3/8                | 3/4              | 1-1/8 | .425  | 1.060 | 1.636 | .247            |
| P8MEB4   | N8MEB4                  | 1/2                | 1/4              | 9/16  | .550  | 1.123 | 1.406 | .372            |
| P8MEB6   | N8MEB6                  | 1/2                | 3/8              | 11/16 | .550  | 1.123 | 1.436 | .372            |
| P8MEB8   | N8MEB8                  | 1/2                | 1/2              | 7/8   | .550  | 1.123 | 1.626 | .372            |
| P8MEB12  | N8MEB12                 | 1/2                | 3/4              | 1-1/8 | .550  | 1.123 | 1.636 | .372            |
| P10MEB6  | N10MEB6                 | 5/8                | 3/8              | 11/16 | .644  | 1.170 | 1.436 | .465            |
| P10MEB8  | N10MEB8                 | 5/8                | 1/2              | 7/8   | .644  | 1.170 | 1.626 | .465            |
| P10MEB12   | N10MEB12                | 5/8                | 3/4              | 1-1/8 | .644  | 1.170 | 1.636 | .465            |
| P12MEB8  | N12MEB8                 | 3/4                | 1/2              | 7/8   | .788  | 1.242 | 1.626 | .606            |



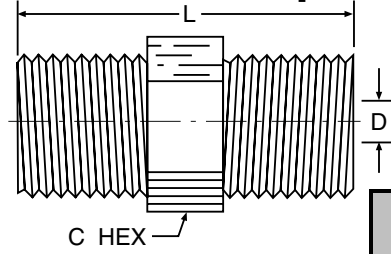
# UCB - Union Connector



| Black High Density Polyethylene Part Number | White Nylon Part Number | 1    | 2    | O. D. 1 | O. D. 2 | L     | D Flow Diameter |
|---|-------------------------|------|------|---------|---------|-------|-----------------|
| #   | #                       |      |      |         |         |       |                 |
| P2UCB2                                      | N2UCB2                  | 1/8  | 1/8  | .152    | .152    | .625  | .050            |
| P3UCB3                                      | N3UCB3                  | 3/16 | 3/16 | .245    | .245    | 1.750 | .106            |
| P4UCB3                                      | N4UCB3                  | 1/4  | 3/16 | .308    | .245    | 1.750 | .106            |
| P4UCB4                                      | N4UCB4                  | 1/4  | 1/4  | .308    | .308    | 1.750 | .153            |
| P5UCB5                                      | N5UCB5                  | 5/16 | 5/16 | .361    | .361    | 1.750 | .215            |
| P6UCB4                                      | N6UCB4                  | 3/8  | 1/4  | .425    | .308    | 1.750 | .153            |
| P6UCB6                                      | N6UCB6                  | 3/8  | 3/8  | .425    | .425    | 1.733 | .247            |
| P8UCB4                                      | N8UCB4                  | 1/2  | 1/4  | .550    | .308    | 1.750 | .153            |
| P8UCB6                                      | N8UCB6                  | 1/2  | 3/8  | .550    | .425    | 1.750 | .247            |
| P8UCB8                                      | N8UCB8                  | 1/2  | 1/2  | .550    | .550    | 1.750 | .372            |
| P10UCB6                                     | N10UCB6                 | 5/8  | 3/8  | .644    | .425    | 1.750 | .247            |
| P10UCB8                                     | N10UCB8                 | 5/8  | 1/2  | .644    | .550    | 1.750 | .372            |
| P10UCB10                                    | N10UCB10                | 5/8  | 5/8  | .644    | .644    | 1.750 | .465            |

E

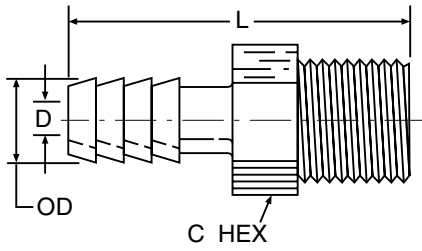
# HPN - Hex Pipe Nipple



| Black High Density Linear Polyethylene Part Number | White Nylon Part Number | Side 1 | Side 2 | C Hex | L     | D1 Diameter | D2 Diameter |
|--|-------------------------|--------|--------|-------|-------|-------------|-------------|
| #  | #                       |        |        |       |       |             |             |
| P2HPN2   | N2HPN2                  | 1/8    | 1/8    | 7/16  | 1.062 | .187        | .187        |
| P4HPN2   | N4HPN2                  | 1/4    | 1/8    | 9/16  | 1.281 | .286        | .187        |
| P4HPN4   | N4HPN4                  | 1/4    | 1/4    | 9/16  | 1.469 | .285        | .285        |
| P6HPN2   | N6HPN2                  | 3/8    | 1/8    | 11/16 | 1.332 | .406        | .187        |
| P6HPN4   | N6HPN4                  | 3/8    | 1/4    | 11/16 | 1.488 | .406        | .285        |
| P6HPN6   | N6HPN6                  | 3/8    | 3/8    | 11/16 | 1.500 | .406        | .406        |
| P8HPN2   | N8HPN2                  | 1/2    | 1/8    | 7/8   | 1.485 | .618        | .187        |
| P8HPN4   | N8HPN4                  | 1/2    | 1/4    | 7/8   | 1.687 | .618        | .285        |
| P8HPN6   | N8HPN6                  | 1/2    | 3/8    | 7/8   | 1.687 | .618        | .406        |
| P8HPN8   | N8HPN8                  | 1/2    | 1/2    | 7/8   | 1.875 | .618        | .618        |
| P12HPN6  | N12HPN6                 | 3/4    | 3/8    | 1-1/8 | 1.703 | .750        | .408        |
| P12HPN8  | N12HPN8                 | 3/4    | 1/2    | 1-1/8 | 1.891 | .750        | .618        |
| P12HPN12   | N12HPN12                | 3/4    | 3/4    | 1-1/8 | 1.932 | .750        | .750        |



# MCB - Male Connector Adapter



| Black High Density Linear Polyethylene Part Number | White Nylon Part Number | Tube or Hose I. D. | NPTF Pipe Thread | C Hex | O. D. | L     | D Flow Diameter |
|--|-------------------------|--------------------|------------------|-------|-------|-------|-----------------|
| #  | #                       |                    |                  |       |       |       |                 |
| P3MCB2   | N3MCB2                  | 3/16               | 1/8              | 7/16  | .245  | 1.530 | .106            |
| P3MCB4   | N3MCB4                  | 3/16               | 1/4              | 9/16  | .245  | 1.750 | .106            |
| P3MCB8   | N3MCB8                  | 3/16               | 1/2              | 7/8   | .245  | 1.970 | .106            |
| P4MCB2   | N4MCB2                  | 1/4                | 1/8              | 7/16  | .308  | 1.530 | .153            |
| P4MCB4   | N4MCB4                  | 1/4                | 1/4              | 9/16  | .308  | 1.750 | .153            |
| P4MCB6   | N4MCB6                  | 1/4                | 3/8              | 11/16 | .308  | 1.780 | .153            |
| P4MCB8   | N4MCB8                  | 1/4                | 1/2              | 7/8   | .308  | 1.970 | .153            |
| P4MCB12  | N4MCB12                 | 1/4                | 3/4              | 1-1/8 | .308  | 1.980 | .153            |
| P5MCB2   | N5MCB2                  | 5/16               | 1/8              | 7/16  | .361  | 1.530 | .215            |
| P5MCB4   | N5MCB4                  | 5/16               | 1/4              | 9/16  | .361  | 1.750 | .215            |
| P5MCB6   | N5MCB6                  | 5/16               | 3/8              | 11/16 | .361  | 1.780 | .215            |
| P6MCB2   | N6MCB2                  | 3/8                | 1/8              | 7/16  | .425  | 1.530 | .247            |
| P6MCB4   | N6MCB4                  | 3/8                | 1/4              | 9/16  | .425  | 1.750 | .247            |
| P6MCB6   | N6MCB6                  | 3/8                | 3/8              | 11/16 | .425  | 1.780 | .247            |
| P6MCB8   | N6MCB8                  | 3/8                | 1/2              | 7/8   | .425  | 1.970 | .247            |
| P6MCB12  | N6MCB12                 | 3/8                | 3/4              | 1-1/8 | .425  | 1.980 | .247            |
| P8MCB4   | N8MCB4                  | 1/2                | 1/4              | 9/16  | .550  | 1.750 | .372            |
| P8MCB6   | N8MCB6                  | 1/2                | 3/8              | 11/16 | .550  | 1.780 | .372            |
| P8MCB8   | N8MCB8                  | 1/2                | 1/2              | 7/8   | .550  | 1.970 | .372            |
| P8MCB12  | N8MCB12                 | 1/2                | 3/4              | 1-1/8 | .550  | 1.980 | .372            |
| P10MCB6  | N10MCB6                 | 5/8                | 3/8              | 11/16 | .644  | 1.780 | .465            |
| P10MCB8  | N10MCB8                 | 5/8                | 1/2              | 7/8   | .644  | 1.970 | .465            |
| P10MCB12   | N10MCB12                | 5/8                | 3/4              | 1-1/8 | .644  | 1.980 | .465            |
| P12MCB8  | N12MCB8                 | 3/4                | 1/2              | 7/8   | .788  | 1.970 | .606            |
| P12MCB12   | N12MCB12                | 3/4                | 3/4              | 1-1/8 | .788  | 1.980 | .606            |



# Mini-Barb Thermoplastic Fittings

Mini-Barb Fittings are precision molded from 100% virgin thermoplastic resins. The barb design uses a tube expansion ratio of 1-1/2 x tube I. D., allowing ease of installation while retaining leak free, high-pressure capabilities.

Parflex Mini-Barb fittings use a special tapered #10-32 UNF threaded design to compensate for threaded port connections which are oversized or misaligned. Mini-barbs eliminate the need for thread sealant when tightened to the shoulder; however, thread sealant should be used to guarantee a leak-free connection. The minimum full thread engagement is 1/4". The 90° inclusive lead thread countersink ranges from .21" to .23"

Male connectors and hex plugs are also available with a standard, straight #10-32 UNF male thread, and require .2" minimum full thread.

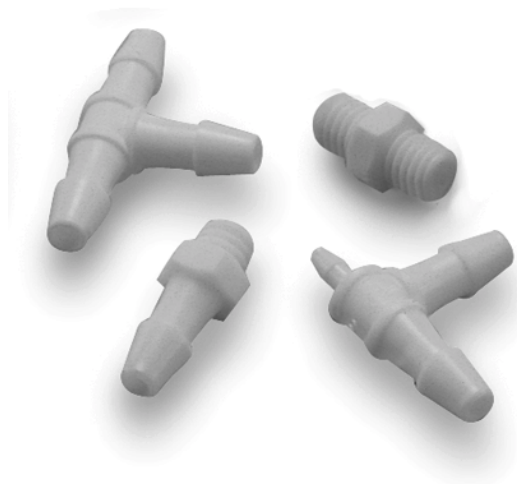
Color coded materials simplify circuit design.

**Materials:** Mini-Barb fittings are available in two materials – nylon in a choice of colors, and polypropylene in natural.

**Applications:** Use with Parflex or other high quality soft flexible tubing and hose for pneumatic instrumentation circuits, fluidic circuitry, pneumatic logic, laboratory and automated production equipment, dental/medical equipment and other applications where miniature fluid components are required.

**Working Pressure and Temperature Ranges:**

- Up to 125 psi
- Polypropylene from 0°F (-18°F) to +212°F (+100°C)
- Nylon from -40°F (-40°C) to 200°F (+93°C)



**Sizes:**

All threads are #10-32 special taper or standard straight. Tube sizes are determined by the number of sixteenths of an inch in the tube I. D.

- 1 = 1/16
- 15 (1.5) = 3/32
- 2 = 1/8
- 25 (2.5) = 5/32

**How to order Mini-Thermoplastic fittings:** Part numbers are constructed from symbols that identify the material, size, style and color of the fitting.

**Example:**

**Material**  
Mini-thermoplastic Nylon

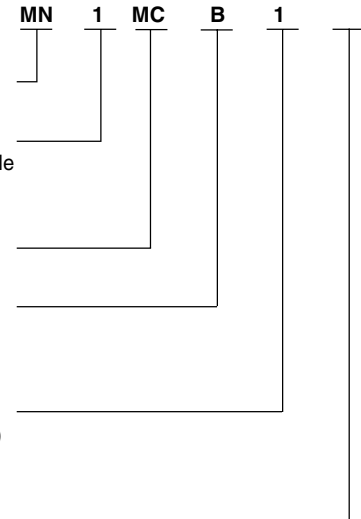
**Tube Size I. D.\***  
or Thread Size when applicable  
1 = 1/16" (.062) tube  
\*Leave blank on HPL, SPL

**Style**  
Male connector

**Style**  
Barbed Tube Connection  
leave blank on HPL, SPL, HPN

**Thread Size\***  
(or Tube I. D. when applicable)  
1 = #10-32  
\*Leave blank on YUB, TPB

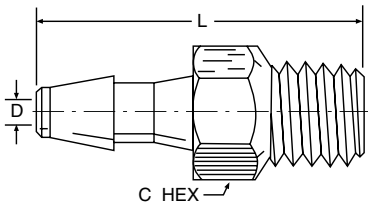
**Color**  
Blank = Black





# SMCB - Male Connector

## Straight #10-32 Thread



### 1SMCB1

| Part Number | Color   | Tube I. D. | Thread Size | C Hex | L   | Flow Diameter D |
|-------------|---------|------------|-------------|-------|-----|-----------------|
| #           |         |            |             |       |     |                 |
| MN1SMCB1W   | White   | .062       | 10-32 UNF   | 1/4   | .45 | .047            |
| MN1SMCB1G   | Green   | .062       | 10-32 UNF   | 1/4   | .45 | .047            |
| MN1SMCB1    | Black   | .062       | 10-32 UNF   | 1/4   | .45 | .047            |
| MN1SMCB1B   | Blue    | .062       | 10-32 UNF   | 1/4   | .45 | .047            |
| MN1SMCB1R   | Red     | .062       | 10-32 UNF   | 1/4   | .45 | .047            |
| MP1SMCB1N   | Natural | .062       | 10-32 UNF   | 1/4   | .45 | .047            |

### 15SMCB1

| Part Number | Color   | Tube I. D. | Thread Size | C Hex | L   | Flow Diameter D |
|-------------|---------|------------|-------------|-------|-----|-----------------|
| #           |         |            |             |       |     |                 |
| MN15SMCB1W  | White   | .094       | 10-32 UNF   | 1/4   | .55 | .070            |
| MN15SMCB1G  | Green   | .094       | 10-32 UNF   | 1/4   | .55 | .070            |
| MN15SMCB1   | Black   | .094       | 10-32 UNF   | 1/4   | .55 | .070            |
| MN15SMCB1B  | Blue    | .094       | 10-32 UNF   | 1/4   | .55 | .070            |
| MN15SMCB1R  | Red     | .094       | 10-32 UNF   | 1/4   | .55 | .070            |
| MP15SMCB1N  | Natural | .094       | 10-32 UNF   | 1/4   | .55 | .070            |

### 2SMCB1

| Part Number | Color   | Tube I. D. | Thread Size | C Hex | L   | Flow Diameter D |
|-------------|---------|------------|-------------|-------|-----|-----------------|
| #           |         |            |             |       |     |                 |
| MN2SMCB1W   | White   | .125       | 10-32 UNF   | 1/4   | .64 | .094            |
| MN2SMCB1G   | Green   | .125       | 10-32 UNF   | 1/4   | .64 | .094            |
| MN2SMCB1    | Black   | .125       | 10-32 UNF   | 1/4   | .64 | .094            |
| MN2SMCB1B   | Blue    | .125       | 10-32 UNF   | 1/4   | .64 | .094            |
| MN2SMCB1R   | Red     | .125       | 10-32 UNF   | 1/4   | .64 | .094            |
| MP2SMCB1N   | Natural | .125       | 10-32 UNF   | 1/4   | .64 | .094            |

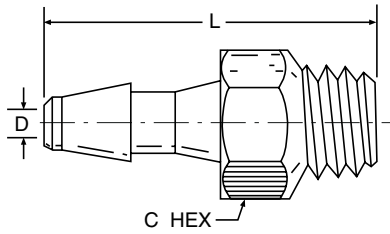
### 25SMCB1

| Part Number | Color   | Tube I. D. | Thread Size | C Hex | L   | Flow Diameter D |
|-------------|---------|------------|-------------|-------|-----|-----------------|
| #           |         |            |             |       |     |                 |
| MN25SMCB1W  | White   | .156       | 10-32 UNF   | 1/4   | .74 | .117            |
| MN25SMCB1G  | Green   | .156       | 10-32 UNF   | 1/4   | .74 | .117            |
| MN25SMCB1   | Black   | .156       | 10-32 UNF   | 1/4   | .74 | .117            |
| MN25SMCB1B  | Blue    | .156       | 10-32 UNF   | 1/4   | .74 | .117            |
| MN25SMCB1R  | Red     | .156       | 10-32 UNF   | 1/4   | .74 | .117            |
| MP25SMCB1N  | Natural | .156       | 10-32 UNF   | 1/4   | .74 | .117            |



# MCB - Male Connector

## Special Tapered #10-32 Thread



### 1MCB1

| Part Number | Color   | Tube I. D. | Tapered Thread | C Hex | L   | Flow Diameter D |
|-------------|---------|------------|----------------|-------|-----|-----------------|
| #           |         |            |                |       |     |                 |
| MN1MCB1W    | White   | .062       | 10-32 UNF      | 1/4   | .49 | .047            |
| MN1MCB1G    | Green   | .062       | 10-32 UNF      | 1/4   | .49 | .047            |
| MN1MCB1     | Black   | .062       | 10-32 UNF      | 1/4   | .49 | .047            |
| MN1MCB1B    | Blue    | .062       | 10-32 UNF      | 1/4   | .49 | .047            |
| MN1MCB1R    | Red     | .062       | 10-32 UNF      | 1/4   | .49 | .047            |
| MP1MCB1N    | Natural | .062       | 10-32 UNF      | 1/4   | .49 | .047            |

### 15MCB1

| Part Number | Color   | Tube I. D. | Tapered Thread | C Hex | L   | Flow Diameter D |
|-------------|---------|------------|----------------|-------|-----|-----------------|
| #           |         |            |                |       |     |                 |
| MN15MCB1W   | White   | .094       | 10-32 UNF      | 1/4   | .59 | .070            |
| MN15MCB1G   | Green   | .094       | 10-32 UNF      | 1/4   | .59 | .070            |
| MN15MCB1    | Black   | .094       | 10-32 UNF      | 1/4   | .59 | .070            |
| MN15MCB1B   | Blue    | .094       | 10-32 UNF      | 1/4   | .59 | .070            |
| MN15MCB1R   | Red     | .094       | 10-32 UNF      | 1/4   | .59 | .070            |
| MP15MCB1N   | Natural | .094       | 10-32 UNF      | 1/4   | .59 | .070            |

### 2MCB1

| Part Number | Color   | Tube I. D. | Tapered Thread | C Hex | L   | Flow Diameter D |
|-------------|---------|------------|----------------|-------|-----|-----------------|
| #           |         |            |                |       |     |                 |
| MN2MCB1W    | White   | .125       | 10-32 UNF      | 1/4   | .69 | .094            |
| MN2MCB1G    | Green   | .125       | 10-32 UNF      | 1/4   | .69 | .094            |
| MN2MCB1     | Black   | .125       | 10-32 UNF      | 1/4   | .69 | .094            |
| MN2MCB1B    | Blue    | .125       | 10-32 UNF      | 1/4   | .69 | .094            |
| MN2MCB1R    | Red     | .125       | 10-32 UNF      | 1/4   | .69 | .094            |
| MP2MCB1N    | Natural | .125       | 10-32 UNF      | 1/4   | .69 | .094            |

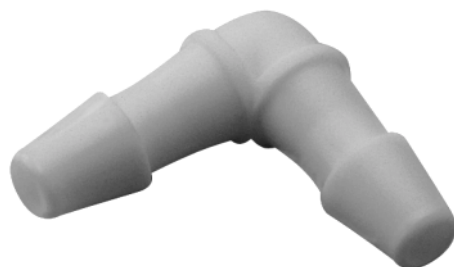
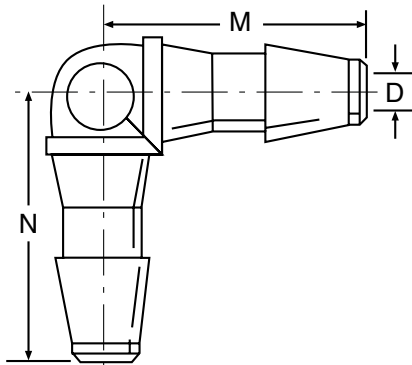
### 25MCB1

| Part Number | Color   | Tube I. D. | Tapered Thread | C Hex | L   | Flow Diameter D |
|-------------|---------|------------|----------------|-------|-----|-----------------|
| #           |         |            |                |       |     |                 |
| MN25MCB1W   | White   | .156       | 10-32 UNF      | 1/4   | .78 | .117            |
| MN25MCB1G   | Green   | .156       | 10-32 UNF      | 1/4   | .78 | .117            |
| MN25MCB1    | Black   | .156       | 10-32 UNF      | 1/4   | .78 | .117            |
| MN25MCB1B   | Blue    | .156       | 10-32 UNF      | 1/4   | .78 | .117            |
| MN25MCB1R   | Red     | .156       | 10-32 UNF      | 1/4   | .78 | .117            |
| MP25MCB1N   | Natural | .156       | 10-32 UNF      | 1/4   | .78 | .117            |





# EUB - Union Elbow



## 1EUB1

| Part Number | Color   | Tube I. D. | M   | N   | Flow Diameter D |
|-------------|---------|------------|-----|-----|-----------------|
| #           |         |            |     |     |                 |
| MN1EUB1W    | White   | .062       | .25 | .25 | .047            |
| MN1EUB1     | Black   | .062       | .25 | .25 | .047            |
| MP1EUB1N    | Natural | .062       | .25 | .25 | .047            |

## 15EUB15

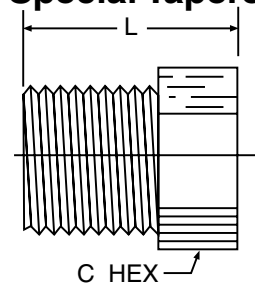
| Part Number | Color   | Tube I. D. | M   | N   | Flow Diameter D |
|-------------|---------|------------|-----|-----|-----------------|
| #           |         |            |     |     |                 |
| MN15EUB15W  | White   | .094       | .37 | .37 | .070            |
| MN15EUB15   | Black   | .094       | .37 | .37 | .070            |
| MP15EUB15N  | Natural | .094       | .37 | .37 | .070            |

## 2EUB2

| Part Number | Color   | Tube I. D. | M   | N   | Flow Diameter D |
|-------------|---------|------------|-----|-----|-----------------|
| #           |         |            |     |     |                 |
| MN2EUB2W    | White   | .125       | .50 | .50 | .094            |
| MN2EUB2     | Black   | .125       | .50 | .50 | .094            |
| MP2EUB2N    | Natural | .125       | .50 | .50 | .094            |

# Plug HPL

Special Tapered #10-32 UNF Thread



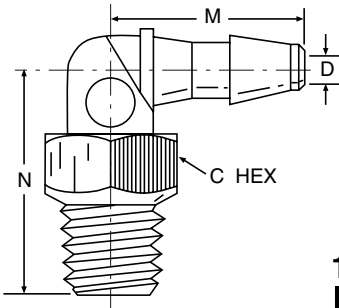
## HPL1

| Part Number | Color   | Tapered Thread | C Hex | L   | M   |
|-------------|---------|----------------|-------|-----|-----|
| #           |         |                |       |     |     |
| MNHPL1W     | White   | 10-32 UNF      | 1/4   | .30 | .20 |
| MNHPL1      | Black   | 10-32 UNF      | 1/4   | .30 | .20 |
| MPHPL1N     | Natural | 10-32 UNF      | 1/4   | .30 | .20 |



# MEB - Male Elbow Connector

## Special Tapered #10-32 Thread



### 1MEB1

| Part Number | Color   | Tube I. D. | Tapered Thread | C Hex | M   | N   | Flow Diameter D |
|-------------|---------|------------|----------------|-------|-----|-----|-----------------|
| #           |         |            |                |       |     |     |                 |
| MN1MEB1W    | White   | .062       | 10-32 UNF      | 1/4   | .25 | .38 | .047            |
| MN1MEB1     | Black   | .062       | 10-32 UNF      | 1/4   | .25 | .38 | .047            |
| MP1MEB1N    | Natural | .062       | 10-32 UNF      | 1/4   | .25 | .38 | .047            |

### 15MEB1

| Part Number | Color   | Tube I. D. | Tapered Thread | C Hex | M   | N   | Flow Diameter D |
|-------------|---------|------------|----------------|-------|-----|-----|-----------------|
| #           |         |            |                |       |     |     |                 |
| MN15MEB1W   | White   | .094       | 10-32 UNF      | 1/4   | .37 | .42 | .070            |
| MN15MEB1    | Black   | .094       | 10-32 UNF      | 1/4   | .37 | .42 | .070            |
| MP15MEB1N   | Natural | .094       | 10-32 UNF      | 1/4   | .37 | .42 | .070            |

### 2MEB1

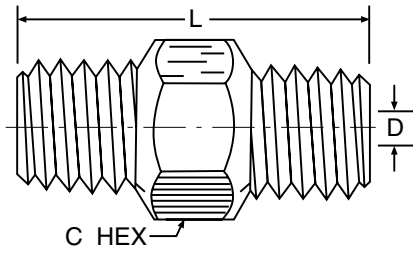
| Part Number | Color   | Tube I. D. | Tapered Thread | C Hex | M   | N   | Flow Diameter D |
|-------------|---------|------------|----------------|-------|-----|-----|-----------------|
| #           |         |            |                |       |     |     |                 |
| MN2MEB1W    | White   | .125       | 10-32 UNF      | 1/4   | .50 | .46 | .094            |
| MN2MEB1     | Black   | .125       | 10-32 UNF      | 1/4   | .50 | .46 | .094            |
| MP2MEB1N    | Natural | .125       | 10-32 UNF      | 1/4   | .50 | .46 | .094            |





# HPN - Nipple

## Special Tapered #10-32 UNF Thread



### 1HPN1

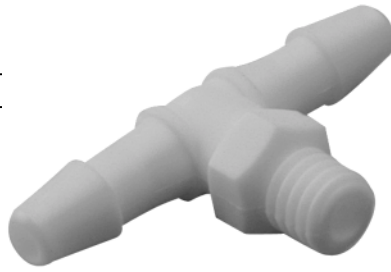
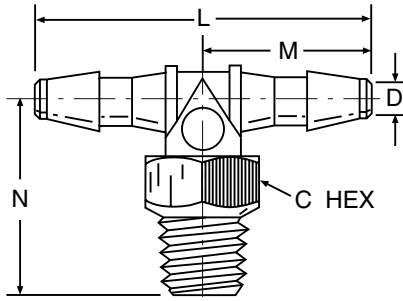
| Part Number | Color   | Tapered Thread | C Hex | L   | Flow Diameter D |
|-------------|---------|----------------|-------|-----|-----------------|
| #           |         |                |       |     |                 |
| MN1HPN1W    | White   | 10-32 UNF      | 1/4   | .49 | .094            |
| MN1HPN1     | Black   | 10-32 UNF      | 1/4   | .49 | .094            |
| MP1HPN1N    | Natural | 10-32 UNF      | 1/4   | .49 | .094            |





# MTB - Male Branch Tee

## Special Tapered #10-32 Thread



### 1MTB1

| Part Number | Color   | Tube I. D. | Tapered Thread | C Hex | L   | M   | N   | Flow Diameter D |
|-------------|---------|------------|----------------|-------|-----|-----|-----|-----------------|
| #           |         |            |                |       |     |     |     |                 |
| MN1MTB1W    | White   | .062       | 10-32 UNF      | 1/4   | .50 | .25 | .38 | .047            |
| MN1MTB1     | Black   | .062       | 10-32 UNF      | 1/4   | .50 | .25 | .38 | .047            |
| MP1MTB1N    | Natural | .062       | 10-32 UNF      | 1/4   | .50 | .25 | .38 | .047            |

### 15MTB1

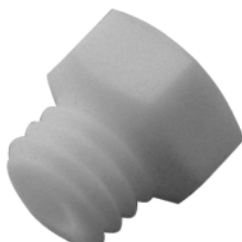
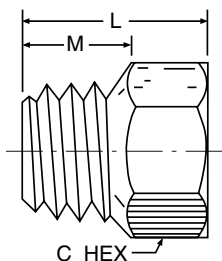
| Part Number | Color   | Tube I. D. | Tapered Thread | C Hex | L   | M   | N   | Flow Diameter D |
|-------------|---------|------------|----------------|-------|-----|-----|-----|-----------------|
| #           |         |            |                |       |     |     |     |                 |
| MN15MTB1W   | White   | .094       | 10-32 UNF      | 1/4   | .75 | .37 | .42 | .070            |
| MN15MTB1    | Black   | .094       | 10-32 UNF      | 1/4   | .75 | .37 | .42 | .070            |
| MP15MTB1N   | Natural | .094       | 10-32 UNF      | 1/4   | .75 | .37 | .42 | .070            |

### 2MTB1

| Part Number | Color   | Tube I. D. | Tapered Thread | C Hex | L    | M   | N   | Flow Diameter D |
|-------------|---------|------------|----------------|-------|------|-----|-----|-----------------|
| #           |         |            |                |       |      |     |     |                 |
| MN2MTB1W    | White   | .125       | 10-32 UNF      | 1/4   | 1.00 | .50 | .46 | .094            |
| MN2MTB1     | Black   | .125       | 10-32 UNF      | 1/4   | 1.00 | .50 | .46 | .094            |
| MP2MTB1N    | Natural | .125       | 10-32 UNF      | 1/4   | 1.00 | .50 | .46 | .094            |

# SPL - Plug

## Straight #10-32 Thread



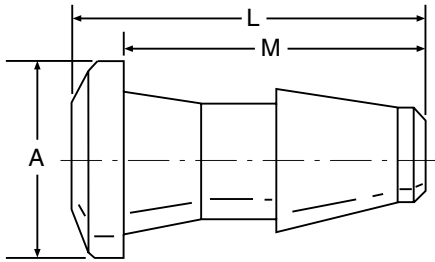
### SPL1

| Part Number | Color   | Thread Size | C Hex | L   | M   |
|-------------|---------|-------------|-------|-----|-----|
| #           |         |             |       |     |     |
| MNSPL1W     | White   | 10-32 UNF   | 1/4   | .26 | .15 |
| MNSPL1      | Black   | 10-32 UNF   | 1/4   | .26 | .15 |
| MPSP1N      | Natural | 10-32 UNF   | 1/4   | .26 | .15 |

E



# TPB - Tube Plug



## 1TPB

| Part Number | Color   | Tube I.D. | A   | L   | M   |
|-------------|---------|-----------|-----|-----|-----|
| #           |         |           |     |     |     |
| MN1TPBW     | White   | .062      | .15 | .24 | .19 |
| MN1TPB      | Black   | .062      | .15 | .24 | .19 |
| MP1TPB      | Natural | .062      | .15 | .24 | .19 |

## 15TPB

| Part Number | Color   | Tube I.D. | A   | L   | M   |
|-------------|---------|-----------|-----|-----|-----|
| #           |         |           |     |     |     |
| MN15TPBW    | White   | .094      | .20 | .35 | .29 |
| MN15TPB     | Black   | .094      | .20 | .35 | .29 |
| MP15TPBN    | Natural | .094      | .20 | .35 | .29 |

## 2TPB

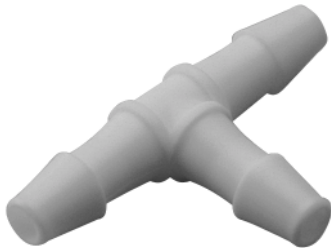
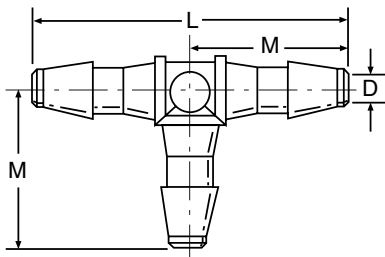
| Part Number | Color   | Tube I.D. | A   | L   | M   |
|-------------|---------|-----------|-----|-----|-----|
| #           |         |           |     |     |     |
| MN2TPBW     | White   | .125      | .28 | .45 | .39 |
| MN2TPB      | Black   | .125      | .28 | .45 | .39 |
| MP2TPBN     | Natural | .125      | .28 | .45 | .39 |

## 25TPB

| Part Number | Color   | Tube I.D. | A   | L   | M   |
|-------------|---------|-----------|-----|-----|-----|
| #           |         |           |     |     |     |
| MN25TPBW    | White   | .156      | .31 | .56 | .48 |
| MN25TPB     | Black   | .156      | .31 | .56 | .48 |
| MP25TPBN    | Natural | .156      | .31 | .56 | .48 |



# TUB - Union Tee



## 1TUB1

| Part Number | Color   | Tube I. D. | L   | M   | Flow Diameter D |
|-------------|---------|------------|-----|-----|-----------------|
| #           |         |            |     |     |                 |
| MN1TUB1W    | White   | .062       | .50 | .25 | .047            |
| MN1TUB1     | Black   | .062       | .50 | .25 | .047            |
| MP1TUB1N    | Natural | .062       | .50 | .25 | .047            |

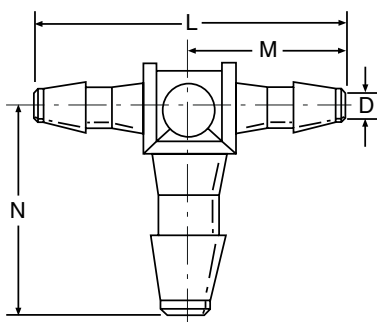
## 15TUB15

| Part Number | Color   | Tube I. D. | L   | M   | Flow Diameter D |
|-------------|---------|------------|-----|-----|-----------------|
| #           |         |            |     |     |                 |
| MN15TUB15W  | White   | .094       | .75 | .37 | .070            |
| MN15TUB15   | Black   | .094       | .75 | .37 | .070            |
| MP15TUB15N  | Natural | .094       | .75 | .37 | .070            |

## 2TUB2

| Part Number | Color   | Tube I. D. | L    | M   | Flow Diameter D |
|-------------|---------|------------|------|-----|-----------------|
| #           |         |            |      |     |                 |
| MN2TUB2W    | White   | .125       | 1.00 | .50 | .094            |
| MN2TUB2     | Black   | .125       | 1.00 | .50 | .094            |
| MP2TUB2N    | Natural | .125       | 1.00 | .50 | .094            |

### (Combination Sizes)



## 1TUB15

| Part Number | Color   | Tube I. D. | L   | M   | N   | Flow Diameter D |
|-------------|---------|------------|-----|-----|-----|-----------------|
| #           |         |            |     |     |     |                 |
| MN1TUB15W   | White   | .062x.094  | .55 | .28 | .37 | .047            |
| MN1TUB15    | Black   | .062x.094  | .55 | .28 | .37 | .047            |
| MP1TUB15N   | Natural | .062x.094  | .55 | .28 | .37 | .047            |

## 1TUB2

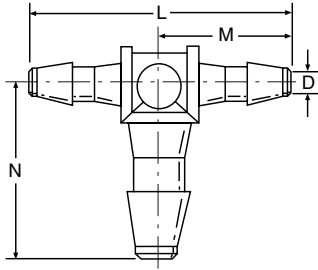
| Part Number | Color   | Tube I. D. | L   | M   | N   | Flow Diameter D |
|-------------|---------|------------|-----|-----|-----|-----------------|
| #           |         |            |     |     |     |                 |
| MN1TUB2W    | White   | .062x.125  | .61 | .30 | .50 | .047            |
| MN1TUB2     | Black   | .062x.125  | .61 | .30 | .50 | .047            |
| MP1TUB2N    | Natural | .062x.125  | .61 | .30 | .50 | .047            |

E



# TUB - Union Tee

## Combination Sizes Continued



### 15TUB1

| Part Number | Color   | Tube I. D. | L   | M   | N   | Flow Diameter D |
|-------------|---------|------------|-----|-----|-----|-----------------|
| #           |         |            |     |     |     |                 |
| MN15TUB1W   | White   | .094x.062  | .75 | .37 | .28 | .070            |
| MN15TUB1    | Black   | .094x.062  | .75 | .37 | .28 | .070            |
| MP15TUB1N   | Natural | .094x.062  | .75 | .37 | .28 | .070            |

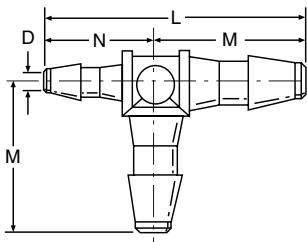
### 15TUB2

| Part Number | Color   | Tube I. D. | L   | M   | N   | Flow Diameter D |
|-------------|---------|------------|-----|-----|-----|-----------------|
| #           |         |            |     |     |     |                 |
| MN15TUB2W   | White   | .094x.125  | .80 | .40 | .50 | .070            |
| MN15TUB2    | Black   | .094x.125  | .80 | .40 | .50 | .070            |
| MP15TUB2N   | Natural | .094x.125  | .80 | .40 | .50 | .070            |

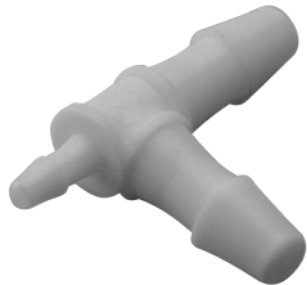
### 2TUB1

| Part Number | Color   | Tube I. D. | L    | M   | N   | Flow Diameter D |
|-------------|---------|------------|------|-----|-----|-----------------|
| #           |         |            |      |     |     |                 |
| MN2TUB1W    | White   | .125x.062  | 1.00 | .50 | .30 | .047            |
| MN2TUB1     | Black   | .125x.062  | 1.00 | .50 | .30 | .047            |
| MP2TUB1N    | Natural | .125x.062  | 1.00 | .50 | .30 | .047            |

### 2TUB15



| Part Number | Color   | Tube I. D. | L    | M   | N   | Flow Diameter D |
|-------------|---------|------------|------|-----|-----|-----------------|
| #           |         |            |      |     |     |                 |
| MN2TUB15W   | White   | .125x.094  | 1.00 | .50 | .40 | .070            |
| MN2TUB15    | Black   | .125x.094  | 1.00 | .50 | .40 | .070            |
| MP2TUB15N   | Natural | .125x.094  | 1.00 | .50 | .40 | .070            |



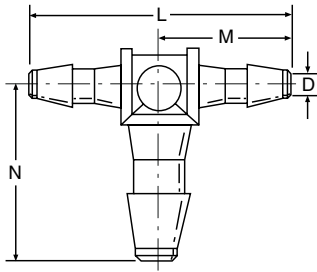
### 115TUB15

| Part Number | Color   | Tube I. D. | L   | M   | N   | Flow Diameter D |
|-------------|---------|------------|-----|-----|-----|-----------------|
| #           |         |            |     |     |     |                 |
| MN115TUB15W | White   | .062x.094  | .65 | .37 | .28 | .047            |
| MN115TUB15  | Black   | .062x.094  | .65 | .37 | .28 | .047            |
| MP115TUB15N | Natural | .062x.094  | .65 | .37 | .28 | .047            |



# TUB - Union Tee

## Combination Sizes Continued



### 12TUB2

| Part Number | Color   | Tube I. D. | L   | M   | N   | Flow Diameter D |
|-------------|---------|------------|-----|-----|-----|-----------------|
| #           |         |            |     |     |     |                 |
| MN12TUB2W   | White   | .062x.125  | .80 | .50 | .30 | .047            |
| MN12TUB2    | Black   | .062x.125  | .80 | .50 | .30 | .047            |
| MP12TUB2N   | Natural | .062x.125  | .80 | .50 | .30 | .047            |



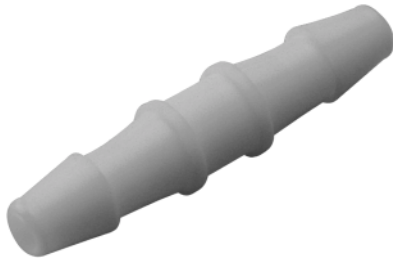
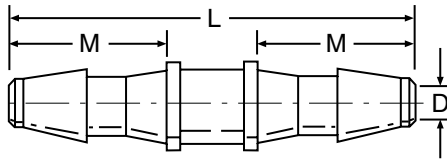
### 152TUB2

| Part Number | Color   | Tube I. D. | L   | M   | N   | Flow Diameter D |
|-------------|---------|------------|-----|-----|-----|-----------------|
| #           |         |            |     |     |     |                 |
| MN152TUB2W  | White   | .094x.125  | .90 | .50 | .40 | .070            |
| MN152TUB2   | Black   | .094x.125  | .90 | .50 | .40 | .070            |
| MP152TUB2N  | Natural | .094x.125  | .90 | .50 | .40 | .070            |





# UCB - Union



## 1UCB1

| Part Number | Color   | Tube I. D. | L   | M   | Flow Diameter D |
|-------------|---------|------------|-----|-----|-----------------|
| #           |         |            |     |     |                 |
| MN1UCB1W    | White   | .062       | .50 | .19 | .047            |
| MN1UCB1     | Black   | .062       | .50 | .19 | .047            |
| MP1UCB1N    | Natural | .062       | .50 | .19 | .047            |

## 15UCB15

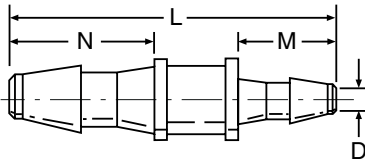
| Part Number | Color   | Tube I. D. | L   | M   | Flow Diameter D |
|-------------|---------|------------|-----|-----|-----------------|
| #           |         |            |     |     |                 |
| MN15UCB15W  | White   | .094       | .75 | .29 | .070            |
| MN15UCB15   | Black   | .094       | .75 | .29 | .070            |
| MP15UCB15N  | Natural | .094       | .75 | .29 | .070            |

## 2UCB2

| Part Number | Color   | Tube I. D. | L    | M   | Flow Diameter D |
|-------------|---------|------------|------|-----|-----------------|
| #           |         |            |      |     |                 |
| MN2UCB2W    | White   | .125       | 1.00 | .39 | .094            |
| MN2UCB2     | Black   | .125       | 1.00 | .39 | .094            |
| MP2UCB2N    | Natural | .125       | 1.00 | .39 | .094            |



# UCB - Union Reducers



## 15UCB1

| Part Number | Color   | Tube I. D. | L   | M   | N   | Flow Diameter D |
|-------------|---------|------------|-----|-----|-----|-----------------|
| #           |         |            |     |     |     |                 |
| MN15UCB1W   | White   | .094x.062  | .65 | .19 | .29 | .047            |
| MN15UCB1    | Black   | .094x.062  | .65 | .19 | .29 | .047            |
| MP15UCB1N   | Natural | .094x.062  | .65 | .19 | .29 | .047            |

## 2UCB15

| Part Number | Color   | Tube I. D. | L   | M   | N   | Flow Diameter D |
|-------------|---------|------------|-----|-----|-----|-----------------|
| #           |         |            |     |     |     |                 |
| MN2UCB15W   | White   | .125x.094  | .90 | .29 | .39 | .070            |
| MN2UCB15    | Black   | .125x.094  | .90 | .29 | .39 | .070            |
| MP2UCB15N   | Natural | .125x.094  | .90 | .29 | .39 | .070            |

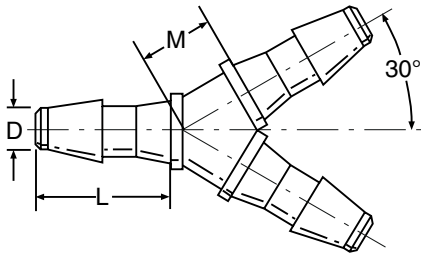
## 2UCB1

| Part Number | Color   | Tube I. D. | L   | M   | N   | Flow Diameter D |
|-------------|---------|------------|-----|-----|-----|-----------------|
| #           |         |            |     |     |     |                 |
| MN2UCB1W    | White   | .125x.062  | .80 | .19 | .39 | .047            |
| MN2UCB1     | Black   | .125x.062  | .80 | .19 | .39 | .047            |
| MP2UCB1N    | Natural | .125x.062  | .80 | .19 | .39 | .047            |





# YUB - Y Connector



## 1YUB

| Part Number | Color   | Tube I. D. | L   | M   | Flow Diameter D |
|-------------|---------|------------|-----|-----|-----------------|
| #           |         |            |     |     |                 |
| MN1YUBW     | White   | .062       | .19 | .11 | .047            |
| MN1YUB      | Black   | .062       | .19 | .11 | .047            |
| MP1YUBN     | Natural | .062       | .19 | .11 | .047            |

## 15YUB

| Part Number | Color   | Tube I. D. | L   | M   | Flow Diameter D |
|-------------|---------|------------|-----|-----|-----------------|
| #           |         |            |     |     |                 |
| MN15YUBW    | White   | .094       | .29 | .16 | .070            |
| MN15YUB     | Black   | .094       | .29 | .16 | .070            |
| MP15YUBN    | Natural | .094       | .29 | .16 | .070            |

## 2YUB

| Part Number | Color   | Tube I. D. | L   | M   | Flow Diameter D |
|-------------|---------|------------|-----|-----|-----------------|
| #           |         |            |     |     |                 |
| MN2YUBW     | White   | .125       | .39 | .22 | .094            |
| MN2YUB      | Black   | .125       | .39 | .22 | .094            |
| MP2YUBN     | Natural | .125       | .39 | .22 | .094            |

This is the last page of Section E

**CLICK HERE**

to go to the first page of Section F