

Air Brake Hose Ends

Advantages

Easy to assemble and disassemble. Extruded from CA360 or CA345 brass. Sleeves are made from CA274 brass. Readily available in broad selection of configurations and sizes.

Specifications

Air brake hose ends will meet D.O.T. FMVSS571.106 standards when used with SAE J1402 Air brake hose.

Applications

Air brake hose connections.

Working pressure ranges

Up to 125 PSI

Temperature ranges

-40°F to +120°F

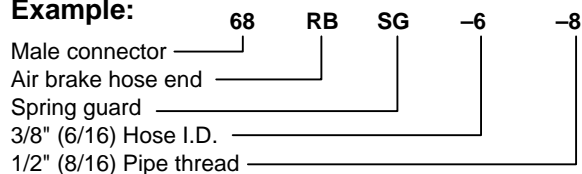
Order

By part number. Nuts, sleeves, bodies and springs may be ordered as separate items by their catalog number.

Nomenclature

Part numbers are constructed from symbols that identify the style and size of the fitting. The first series of numbers and letters identifies the style and type fitting. The second series of numbers describes the size.

Example:



Sizes

Hose sizes are determined by the number of sixteenths of an inch in the hose I.D.

Special fittings

Fitting configuration and/or sizes other than those shown in the catalog can be furnished. It is suggested that a print or sketch be submitted with the inquiry.

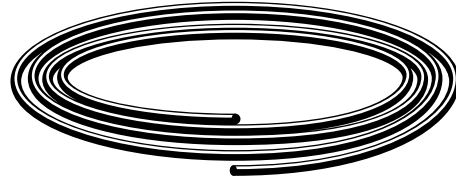
Pricing

Only items priced in current supplementary price list PL3501 are carried in stock. Price and delivery for non-stock items furnished on request for specified quantity.

Parker Stratoflex 273

Meets or exceeds the requirements of SAE J1402 Table A, and Dept. of Transportation FMVSS 106-74, Type A.

PART NO.	HOSE SIZE	HOSE I.D.	HOSE O.D.	MIN. BURST PRESS.	MAX. WORKING PRESS.	MIN. BEND RADUS	APPROX. WT. LBS./FT.
273-6	-6	3/8	.750	900	225	1.75	.204
273-8	-8	1/2	.875	900	225	2.00	.252



Construction

Tube - Synthetic rubber. Reinforcement - One or more fabric braids or spirals. Cover - Abrasion, oil and age resistant synthetic rubber.

Identification

Stratoflex, part number, and appropriate SAE and DOT markings.

Application

Air brake systems.

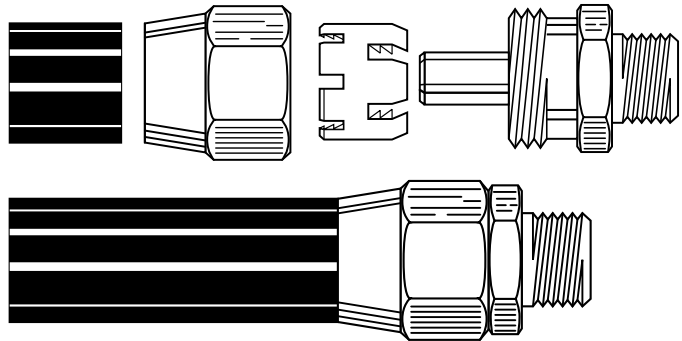
Temperature range

-40°F thru +200°F (-40°C thru +93°C)

Assembly instructions

1. Slide nut onto hose.
2. Slide sleeve onto hose with tapered edge toward fitting body (see example).
3. Bottom hose into fitting.
4. Tighten nut until it contacts body hex.

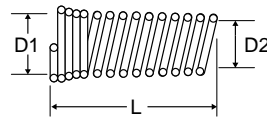
Note: When reassembling fitting, body and nut should be inspected. Only reuse if parts are in proper condition. Sleeves should never be reused.



Air Brake Hoses/Ends Fittings

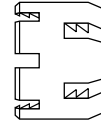
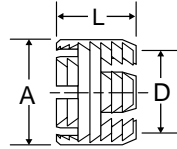
Spring 56RBSG

PART NO.	HOSE SIZE	L	D1	D2
56RBSG-6	3/8	2.75	.84	.78
56RBSG-8	1/2	3.00	1.03	.91



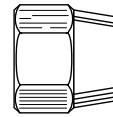
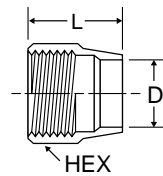
Sleeve 60RB

PART NO.	HOSE SIZE	L	A	D
60RB-6	3/8	.69	.90	.78
60RB-8	1/2	.69	1.03	.92



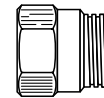
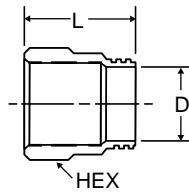
Nut 61RB

PART NO.	HOSE SIZE	STRAIGHT THREAD	HEX	L	D
61RB-6	3/8	31/32-20	1-1/16	1.12	.80
61RB-8	1/2	1-3/32-20	1-1/4	1.12	.93



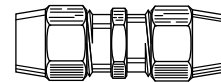
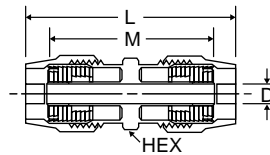
Spring guard nut 61RBSG

PART NO.	HOSE SIZE	STRAIGHT THREAD	HEX	L	D
61RBSG-6	3/8	31/32-20	1-1/16	1.22	.80
61RBSG-8	1/2	1-3/32-20	1-1/4	1.19	.92



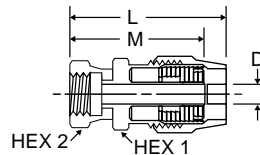
Union 62RB

PART NO.	HOSE SIZE	STRAIGHT THREAD	HEX	L	M	D
62RB-6	3/8	31/32-20	31/32	2.98	2.56	.281
62RB-8	1/2	1-3/32-20	1-1/8	2.99	2.55	.390



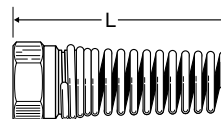
Female swivel connector 66RBSV

PART NO.	HOSE SIZE	STRAIGHT THREAD	HEX1	HEX2	L	M	D
66RBSV-6-3/4	3/8	3/4-20	31/32	7/8	2.30	2.09	.281
66RBSV-8-7/8	1/2	7/8-20	1-1/8	1"	2.36	2.14	.390



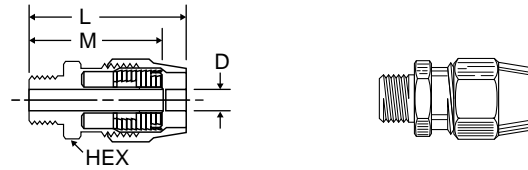
Air brake hose nut & attached spring 67RBSG

PART NO.	L
67RBSG-6	3.50
67RBSG-8	3.75



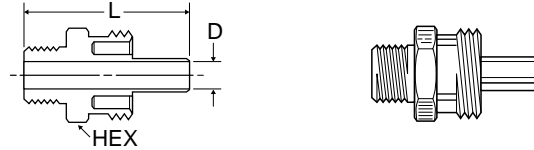
Male connector 68RB

PART NO.	HOSE SIZE	STRAIGHT THREAD	PIPE THREAD	HEX	L	M	D
68RB-6-4	3/8	31/32-20	1/4	31/32	2.24	1.91	.281
68RB-6-6	3/8	31/32-20	3/8	31/32	2.24	1.91	.281
68RB-6-8	3/8	31/32-20	1/2	31/32	2.38	2.06	.281
68RB-8-6	1/2	1-3/32-20	3/8	1-1/8	2.24	1.91	.390
68RB-8-8	1/2	1-3/32-20	1/2	1-1/8	2.29	2.07	.390



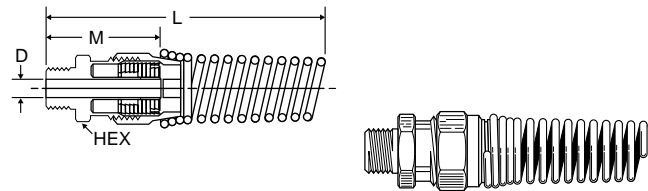
Male connector body only 68RB

PART NO.	STRAIGHT THREAD	PIPE THREAD	HEX	L	D
68RB-6-4B	31/32-20	1/4	31/32	1.91	.281
68RB-6-6B	31/32-20	3/8	31/32	1.91	.281
68RB-6-8B	31/32-20	1/2	31/32	2.06	.281
68RB-8-6B	1-3/32-20	3/8	1-1/8	1.91	.390
68RB-8-8B	1-3/32-20	1/2	1-1/8	2.07	.390



Male connector with spring guard 68RBSG

PART NO.	STRAIGHT THREAD	PIPE THREAD	HEX	L	M	D
68RBSG-6-4	3/8	1/4	31/32	4.8	1.91	.281
68RBSG-6-6	3/8	3/8	31/32	4.8	1.91	.281
68RBSG-6-8	3/8	1/2	31/32	4.9	2.06	.281
68RBSG-8-6	1/2	3/8	1-1/8	5.0	1.91	.390
68RBSG-8-8	1/2	1/2	1-1/8	5.2	2.07	.390



Adapter 76RB

PART NO.	PIPE THREAD	STRAIGHT THREAD	HEX	L	D
76RB-3/4-4	1/4	3/4-20	3/4	1.06	.31
76RB-3/4-6	3/8	3/4-20	3/4	1.12	.31
76RB-7/8-6	3/8	7/8-20	7/8	1.18	.44
76RB-7/8-8	1/2	7/8-20	7/8	1.37	.50

